



White House Symposium on Transformative Family Engagement

July 31, 2014 | Washington, DC



W.K.
KELLOGG
FOUNDATION®



The White House Domestic Policy Council

Established by Executive Order in 1993, the Domestic Policy Council (DPC) coordinates the domestic policy-making process in the White House, ensures that domestic policy decisions and programs are consistent with the President's stated goals, and monitors implementation of the President's domestic policy agenda.

U.S. Department of Education

The U.S. Department of Education is the agency of the federal government that establishes policy for, administers, and coordinates most federal assistance to education. It assists the president in executing his education policies for the nation and in implementing laws enacted by Congress. The Department's mission is to serve America's students-to promote student achievement and preparation for global competitiveness by fostering educational excellence and ensuring equal access.

U.S. Department of Health and Human Services

The Department of Health and Human Services (HHS) is the United States government's principal agency for protecting the health of all Americans and providing essential human services, especially for those who are least able to help themselves. That mission is fulfilled every day by providing millions of children, families, and seniors with access to high-quality health care, by helping people find jobs and parents find affordable child care, by keeping the food on Americans' shelves safe and infectious diseases at bay, and by pushing the boundaries of how we diagnose and treat disease.

W.K. Kellogg Foundation

The W.K. Kellogg Foundation (WKKF), founded in 1930 as an independent, private foundation by breakfast cereal pioneer Will Keith Kellogg, is among the largest philanthropic foundations in the United States. Guided by the belief that all children should have an equal opportunity to thrive, WKKF works with communities to create conditions for vulnerable children so they can realize their full potential in school, work and life.

The Kellogg Foundation is based in Battle Creek, Michigan, and works throughout the United States and internationally, as well as with sovereign tribes. Special emphasis is paid to priority places where there are high concentrations of poverty and where children face significant barriers to success. WKKF priority places in the U.S. are in Michigan, Mississippi, New Mexico and New Orleans; and internationally, are in Mexico and Haiti.

Welcome



It is our pleasure to welcome you to the **White House Symposium on Transformative Family Engagement**. We are excited to bring together this distinguished group of philanthropic partners with administration officials, family engagement leaders and field experts to expand the conversation about family engagement as a major contributor to children's school readiness and success.

Transformative family engagement is more than parent involvement – it is a shared responsibility of families, schools and communities aimed at helping students learn and achieve. It is a continuous process from birth to third grade and beyond, and an intentional practice that occurs across all learning environments for children.

Our goal is to cultivate a solutions-oriented discussion on how to achieve educational equity for children — particularly those from low-income families — through transformative family engagement. Over the course of this full-day summit, we're thrilled to hear directly from parents, researchers and leading experts in the field, as well as from U.S. Secretary of Education Arne Duncan, on how family engagement creates meaningful and sustained opportunities for children, families and schools to thrive.

Parents and caregivers are among the strongest voices for ensuring a child's success in school and in life. We are excited at the prospect of working with you to strengthen the foundation for creating pathways for leaders in families, schools and communities to work together through transformative family engagement.

Warmly,

Roberto Rodríguez

Deputy Assistant to the President for Education
The White House

Carla D. Thompson

Vice President for Program Strategy
W.K. Kellogg Foundation



White House Symposium on Transformative Family Engagement

Schedule

July 31, 2014 | Washington, DC

8:00 – 8:45 a.m.	Continental Breakfast and Registration <i>Outside Indian Treaty Room</i>
8:45 – 9:00 a.m.	Welcome & Introduction to the Day Roberto Rodríguez, Deputy Assistant to the President for Education Carla D. Thompson, Vice President for Program Strategy, W.K. Kellogg Foundation
9:00 – 9:40 a.m.	A Conversation with Secretary of Education Arne Duncan
9:40 – 10:00 a.m.	Break & Transition to Working Session Move to EEOB 430
10:00 – 11:20 a.m.	Panel Presentation & Discussion: Exploring the Evidence on Family Engagement as a Bridge to Learning and Success
11:20 a.m. – 12:40 p.m.	Panel Presentation & Discussion: Transformative Family Engagement in Action
12:40 – 12:50 p.m.	Working Lunch Provided
12:50 – 2:10 p.m.	Panel Presentation & Discussion: Measuring and Scaling Family Engagement as an Educational Reform
2:10 – 3:30 p.m.	Panel Presentation & Discussion: Opportunities to Foster Transformative Approaches to Family Engagement
3:30 – 3:40 p.m.	Break
3:40 – 4:40 p.m.	Roadmaps for Implementation
4:40 – 5:00 p.m.	A Call to Action: Opportunities to Advance Family Engagement Cecilia Muñoz, Director, White House Domestic Policy Council
5:00 – 5:20 p.m.	The Path Forward and Conclusion Carla D. Thompson Roberto Rodríguez



Traditional vs. Transformative Family Engagement

The W.K. Kellogg Foundation believes that family engagement is an essential strategy for achieving learning outcomes for children from birth through age 8.

While traditional approaches to family engagement provide an important starting point for conversation, more needs to be done to empower families as partners and leaders in our communities. We believe an agreed-upon definition is necessary to achieve this goal.

WKKF defines transformative family engagement as a shared responsibility of families, schools and communities aimed at helping students learn and

achieve. It is a continuous process from birth to third grade and beyond, and occurs across many settings where children learn — creating environments in which empowered parents and families are leaders.

Below are some important differences between traditional and transformative family engagement approaches:

<h2>Traditional</h2> <p>Deficit-based</p> <p>Many initiatives reinforce negative stereotypes that low-income families simply do not have the skills or interest in engaging in their children’s education.</p>	<h2>Transformative</h2> <p>Strength-based</p> <p>All parents and caregivers want to see their children succeed. They have tremendous strengths to bring to conversations and important decisions on their children’s education.</p>
<p>Individual responsibility</p> <p>Typically, parents are not seen as partners in learning.</p>	<p>Shared responsibility</p> <p>A growing body of research confirms that the best learning environments for children are ones where families, educators and community leaders share responsibility for student success.</p>
<p>Fix the family</p> <p>Typical approaches have not honored the unique strengths families can bring to their children’s education, with an assumption that families need assistance in meeting their parenting responsibilities.</p>	<p>Build the capacity of partners</p> <p>Families, educators and community leaders are equal partners and have a shared voice in student learning.</p>
<p>Cultural hegemony</p> <p>There is an assumption that existing practices are good enough, but research shows that more needs to be done to truly achieve equitable outcomes for children through family engagement.</p>	<p>Open to learn from other cultures</p> <p>Truly transformative family engagement means schools remain open and committed to adapting to the needs, cultures and priorities of local families and communities.</p>



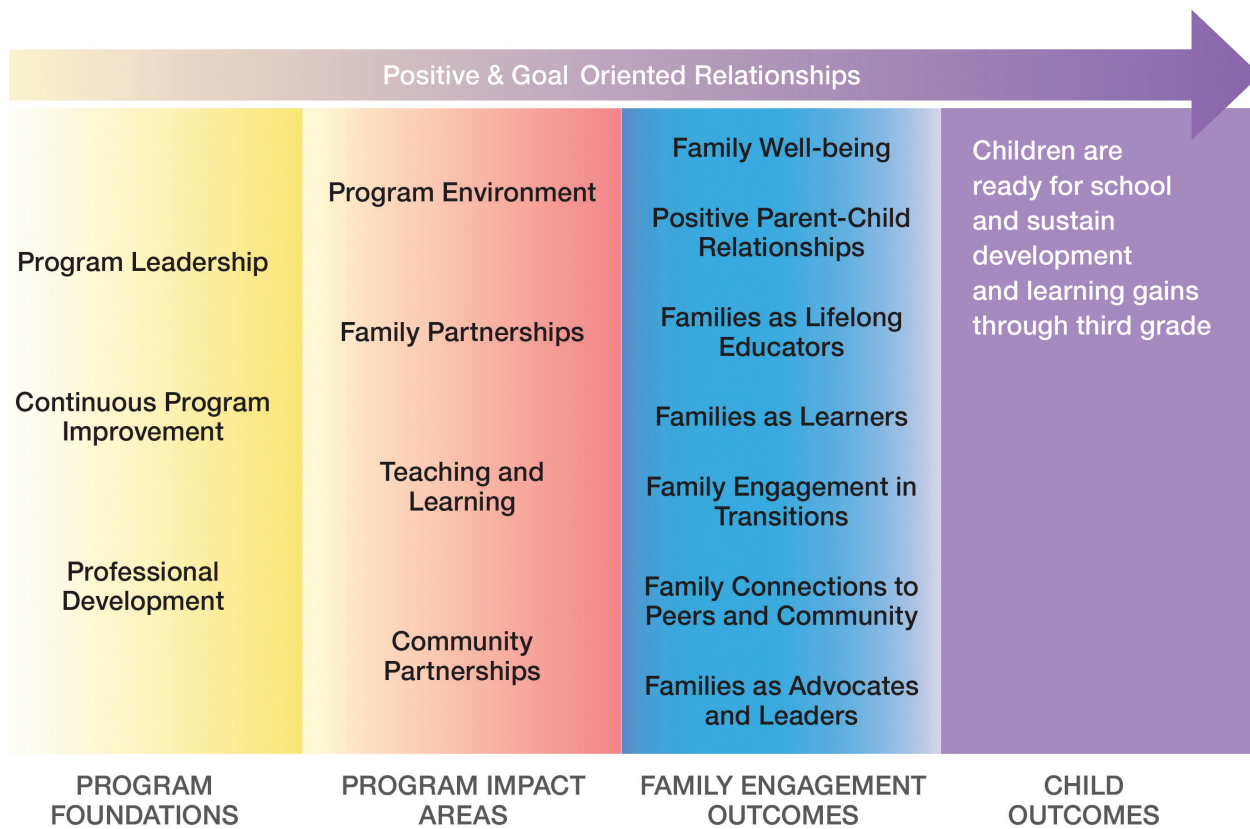
The Dual Capacity-Building Framework for Family-School Partnerships



The Office of Head Start Parent, Family, and Community Engagement Framework



When parent and family engagement activities are systemic and integrated across program foundations and program impact areas, family engagement outcomes are achieved, resulting in children who are healthy and ready for school. Parent and family engagement activities are grounded in positive, ongoing, and goal-oriented relationships with families.





W.K.
KELLOGG
FOUNDATION®

A Partner With Communities Where Children Come First

One Michigan Avenue East
Battle Creek, MI 49017-4012 USA

269-968-1611 MAIN

269-968-0413 FAX

www.wkkf.org

