

Reopening CMSD



Safer | Stronger | Better Together!

HYBRID FAMILY GUIDEBOOK

Table of Contents

Message from CEO Eric S. Gordon	3
Timeline for Reopening CMSD Schools for Hybrid Learning	4-5
Reopening Guidelines	
The Core Planning Team	6
State Guidance for Learning and Teaching	7
Hybrid Opportunity	
Assumptions about Learners and Learning	8
Defining the Learning Options	9-12
Phasing in the Hybrid Learning Model	13
Sample Student Schedules	14-15
Health & Safety Guidelines	
COVID-19 Protocols	16
Safety Guidelines	17
What to Expect When Schools Reopen	18
What Families Can Expect	
School Choice & Enrollment Guidelines	19
Ensuring a Safe, Healthy School Environment	20
A Day in the Life of a Hybrid Learner	21
Technology Use, Distribution and Support	22
School Transportation Policies during COVID-19 Pandemic	23-25
Safety & Security in CMSD Schools	26-27
Parents and Caregivers Guide to Attendance	28
Guidance for Student Athletes and Families	29
Interscholastic Extracurricular Eligibility	30
Services and Supports	
Special Education Hybrid Learning FAQs	31-32
Homeless Children & Families	33-34
English Learners	35
Staying Connected to CMSD	
Family Supports	36

Message from CEO Eric S. Gordon

To Families & Caregivers of CMSD Students:

CMSD's decision to begin transitioning from a full Remote to a Hybrid Learning model comes after a year of disruption for our students, families and staff, as we have worked together to adapt to changing conditions during a pandemic that took us all by surprise last spring.

While we had hoped to begin bringing students back to our school buildings far sooner than March 2021, public health data has driven every decision we have made along the way about in-person and Remote Learning—always with the safety of our entire school community in mind.

Your feedback has been vital all along in our past and current planning for a safe return to our schools, and as public health data continues to improve, our CMSD educators have remained committed to fully orienting families on what to expect as we prepare to transition to a Hybrid Learning Environment.

To ensure the safest and smoothest transition to in-person learning, CMSD is committed to completing the process of vaccinating school staff while phasing in special populations beginning March 1.

A second phase of our transition to Hybrid Learning is scheduled to begin on March 8 with the return of high school freshmen, seniors and career tech students, along with all students in grades PreK-2. Remaining CMSD students will return to school on March 15.

The phased-in approach to reopening our schools enables CMSD to honor its pledge to begin bringing students back by March 1, and also to more cautiously acclimate students and families to a Hybrid Learning environment and the changes you can expect when schools reopen for learning.

The Back-to-School Mailer being sent to homes the week of February 22 includes your child's school and transportation assignment, as well as the days your child is assigned to in-person instruction at school. The mailer details the Hybrid and Remote Learning options available and includes information on how families who choose to remain in Remote Learning can opt out of Hybrid Learning.

This Hybrid Guidebook for Families was created to acclimate students and families to the COVID-19 health and safety protocols to keep students, staff and families safe and to put in one convenient place everything families need to prepare for a transition to Hybrid Learning.

We know that teaching and learning is best when our students and educators are together in school. But we are mindful of the need to be empathetic to the comfort levels of our school community during times of uncertainty. For this reason, our school enrollment specialists will be available February 22 – March 19 by calling 216.838.3675 for families who wish to opt out of Hybrid Learning.

It is my hope that this Hybrid Guidebook, along with weekly updates of our planning and preparation to reopen, will instill confidence that CMSD is ready to welcome back our students and educators, stronger and better than ever.

Thank you for your continued partnership in your child's success. We look forward to welcoming students back to school next month and keeping you informed of our reopening plans and progress in the weeks ahead.

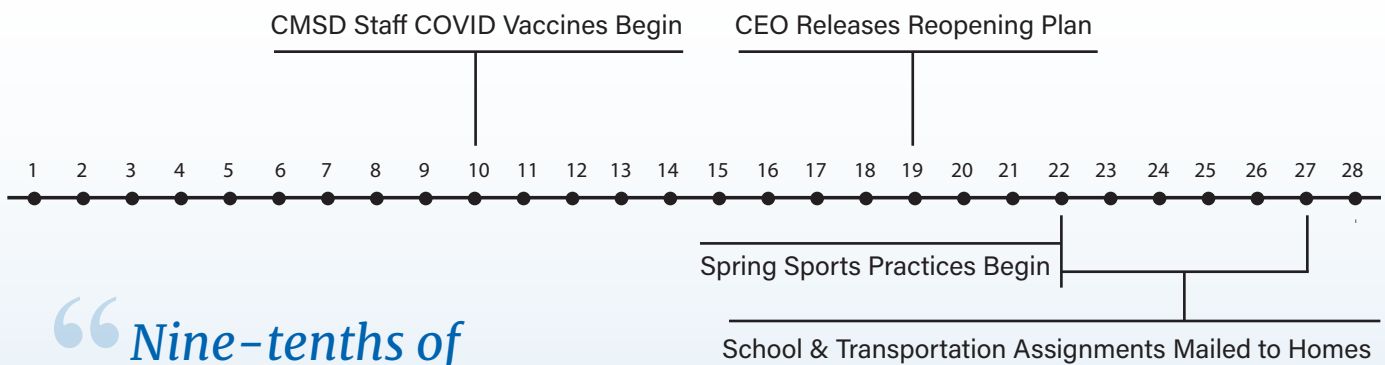
Sincerely,



Eric S. Gordon

Timeline for Reopening CMSD Schools for Hybrid Learning

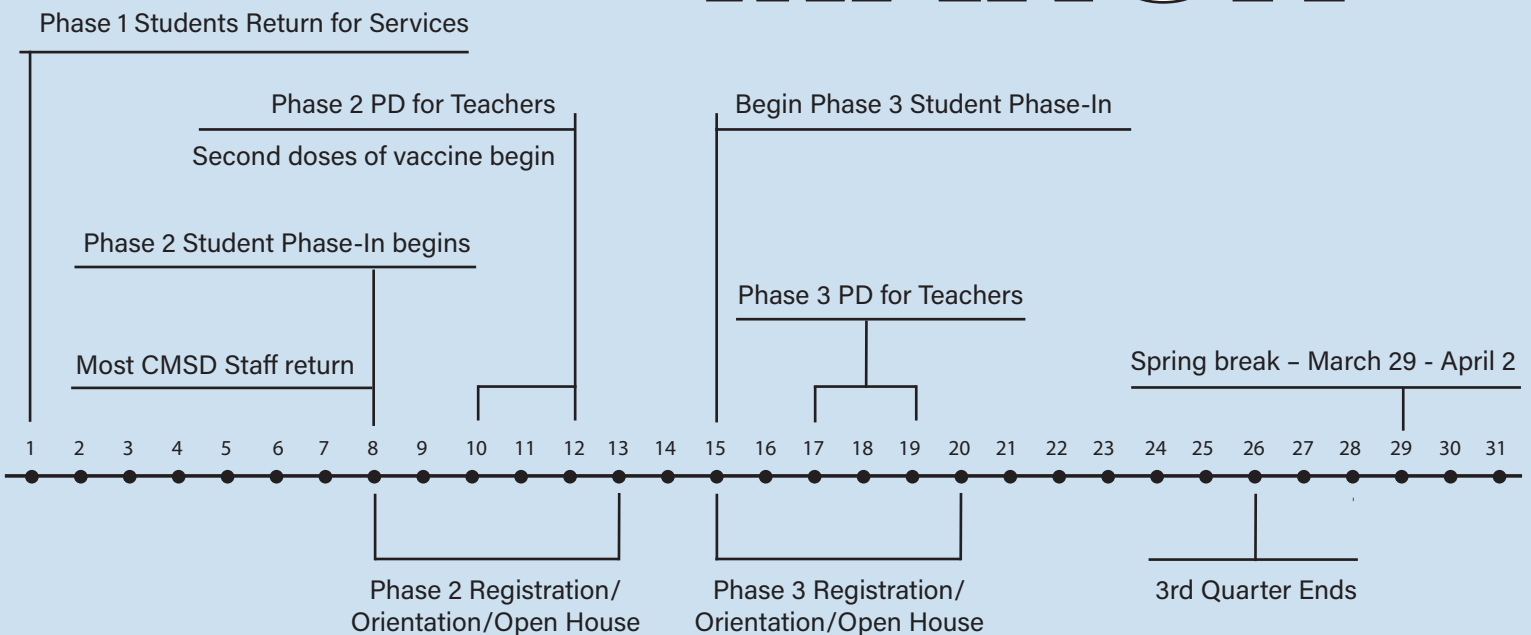
FEBRUARY



“Nine-tenths of education is encouragement.”

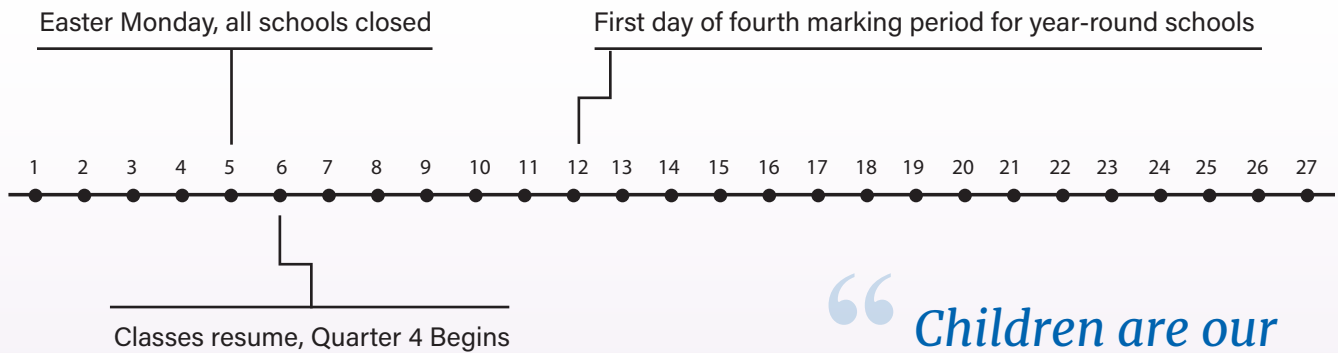
- Anatole France

MARCH



Timeline for Reopening CMSD Schools for Hybrid Learning

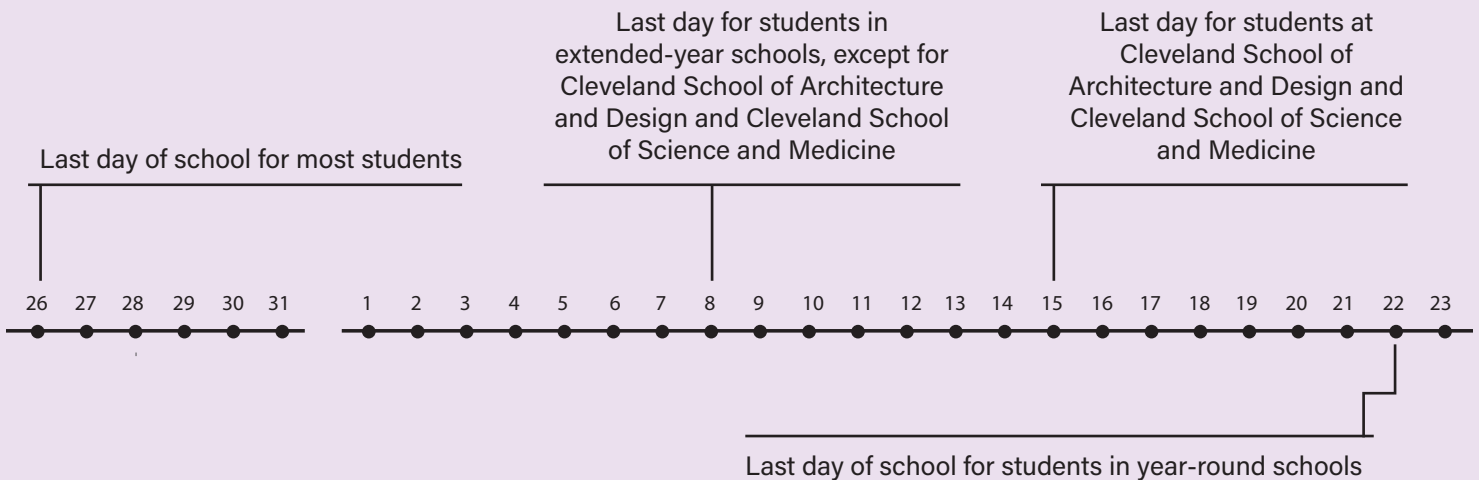
APRIL



“Children are our greatest treasure. They are our future.”

- Nelson Mandela

MAY/JUNE





The Core Planning Team

The Planning Team was comprised of school leaders, teachers, CMSD parents and community leaders representing key partners in the higher education, business, government, faith-based and philanthropic community, who formed and organized the parameters, resources and timeline for CMSD's Transition to Hybrid Learning.

Reopening Plan Co-Leads

Christine Fowler-Mack, *Chief Portfolio Officer*

Lisa Farmer Cole, *Chief of Schools*

Valentina Moxon, *Chief Academic Officer*

Reopening Plan Core Team Members

Roseann Canfora, *Deputy Chief, Communications*

Diana Ehlert, *Deputy Chief, Academic Resources*

Erin Frew, *Network Support Leader*

Eric Gordon, *Chief Executive Officer*

Dennis Hill, *Chief, Safety & Security*

Tracy Hill, *Executive Director of Family & Community Engagement*

Michael Houser, *Policy & Labor Liaison*

Michelle Kirkwood Hughes, *High School Principal*

Trent Mosley, *Chief Engagement Officer*

Ann Mullin, *Parent*

Elizabeth Nelson Creel, *Executive Director, Curriculum*

Shari Obrenski, *Teacher, CTU President*

Tom Ott, *Director, CMSD News Bureau*

Kevin Payton, *Principal, CCAS President*

Tracy Radich, *Teacher, K-8 Upper (Grade 4-5)*

Derek Richey, *Chief Financial Officer*

Gary Sautter, *Deputy Chief, Capital Projects*

Marcy Shankman, *Leadership Coach & Strategist*

Melissa Skelly, *Executive Director of Policy and Planning*

Josh Terchek, *Director, Research & Development*

Karen Thompson, *Chief of Staff*

Curtis Timmons, *Chief, Information Technology*

Lori Ward, *Chief Talent & Equity Officer*

Patrick Zohn, *Chief Operations Officer*

“It will take all of us working together to ensure our staff and students are eager and ready to begin the new school year in learning environments that are safe and fully equipped with the supports they need for success.”

State Guidance for Learning and Teaching

The Ohio Department of Education requires CMSD to provide direction regarding:

1. How we will determine and document the instructional needs of our students
2. How we will ensure equitable access to quality instruction
3. How student progress will be monitored
4. What method(s) we will use to determine competency, credit completion and promotion of students to a higher grade level

CMSD Goals for Learning and Teaching, whether using remote, hybrid or in-person instructional scenarios

- **Guide all decisions around principles of Equity**
CMSD will ensure that all students have access to grade-level content in ways that meet their individual needs, while taking into account their home learning environments (e.g. flexibility in completing asynchronous tasks, the availability of in-person instructional support).
- **Ensuring a coherent learning experience**
CMSD students will experience a coherent/authentic in-person, remote and/or hybrid instructional model aligned with the current curriculum, and with instructional content and quality feedback grounded in best practices and learning research.
- **Instructional Resources and Strategies**
CMSD will provide teachers and school leaders with research-based instructional strategies that support remote and in-person instruction. We will support teachers in their use of the most effective instructional resources and technological tools by providing a recommended list of resources that support each level.
- **Textbooks/Curriculum**
CMSD will continue to invest in high-quality curriculum resources that are culturally responsive. Resources selected can easily be adapted to Remote Learning without sacrificing rigor. The curriculum resource will provide differentiated support to meet the needs of our diverse learners.

FACE COVERINGS



HEALTH ASSESSMENTS



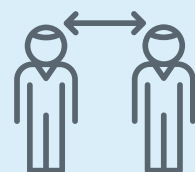
GOOD HYGIENE



CLEAN & SANITIZE



SOCIAL DISTANCING





Hybrid Opportunity

Assumptions about Learners and Learning

CMSD students have not “lost learning,” but they have lost time, and CMSD Staff are committed to providing both instructional and social emotional supports needed to facilitate a safe and productive return to school:

- Regardless of whether families transition to Hybrid or choose to remain in a Remote Learning mode, all CMSD students will receive the same level of instruction and will receive four days of instruction.
- Learning will meet the needs of all students.
- Teachers will instruct from their classrooms for either hybrid or fully Remote Learning.
 - For students returning for Hybrid, we will work to maintain existing student/teacher relationships, recognizing that some changes will occur based on family choice and teacher availability.
- Priorities for in-person time
 - The instructional day will align to each school’s start and end time.
 - Students will have access to encores (art, music, library, physical education, dance, etc.) and other specialty courses, labs, CTE, requiring face to face instruction/learning on in-person days.

Hybrid Opportunity

Defining the Learning Options

While all CMSD staff and students have remained in a Remote Learning environment, CMSD has been actively readying our school facilities and preparing our teachers and school staff for phasing in the Hybrid Learning model as soon as public health conditions enable a safe return to instruction in our school facilities.

As part of that planning, parents and caregivers of CMSD students have been asked to participate in important surveys to indicate your level of comfort and preference for your child’s transition from remote to a Hybrid Learning model during the public health crisis. We recognize that, even with strict safety protocols in place, some families may opt to keep their children in a Remote Learning space to ensure consistency during times of change, or as a personal preference based on a variety of factors. It is our plan to respect those choices when assignments are made for your child’s return to school.

To inform families of the benefits that exist in CMSD’s new Hybrid Learning Model, a side-by-side comparison is below.



Hybrid: In-person & Remote

enables students and their teachers to be physically present in their classrooms for two days each week—or four days for preschool and select special populations as assigned—with remote instruction and/or independent learning on the other days to complete assignments, work on projects, etc.

Remote only

enables students who wish to continue their current method of Remote Learning instruction. This method is for families who prefer to keep their children at home five days each week. Students work with ‘live’ CMSD teachers and work independently on teacher-directed assignments on scheduled school days.

Virtual Academy

is an online-only learning model for students and families who prefer independence from a structured schedule with the flexibility to access pre-recorded lessons and teacher support when needed to complete the required assignments. Enrollment is for the remainder of the current academic year and not a temporary or intermittent option during Remote Learning periods.

Hybrid Opportunity

Defining the Learning Options

	Hybrid: In-person & Remote	Remote Only	Virtual Academy
Academic Supports	Students have access to resources and supports available at their assigned school.	Students and families receive resources and supports from their in-person teacher and/or their assigned school.	Students receive guided notes and are able to request help with completing courses, retaking quizzes after intervention and schedule 'live' support meetings during school hours.
Attendance	To be marked "present," students must be physically present for class. On Remote days, teachers record attendance on weekdays by monitoring daily participation and assignment completion.	Teachers record attendance on weekdays by monitoring daily participation and assignment completion.	Student participation and activity is monitored weekly due to the students' ability to access lessons 24 hours a day, 7 days per week.
Availability of Higher Level Programs	Honors, AP, College Credit Plus and High Tech courses are available as well as IB (at certain buildings).	Honors, AP and College Credit Plus courses are available.	Honors courses and College Credit Plus access are available.
Course Subjects	All CMSD required courses are taught, in addition to any special courses available in the students' specific school.	All CMSD required courses are taught, in addition to some special courses available in the students' specific school.	All CMSD-required courses are taught, in addition to some special courses available in the students' specific school.
Curriculum Content	CMSD teachers create lessons that are aligned to the District's Scope and Sequence.	CMSD teachers create lessons that are aligned to the District's Scope and Sequence.	A syllabus for the entire Ohio State Standards aligned course is provided so students can determine the pace they want to pursue.
Delivery of Instruction	CMSD teachers deliver 'live' instruction/ support in person two days per week and remote instruction two days per week on a set schedule that includes one day off for students to work independently on their assignments, projects and independent studies.	CMSD teachers deliver 'live' instruction/ support for 150 minutes daily on a set Remote Learning schedule that includes direct instruction, guided and independent practice and projects through Schoology or Seesaw software.	Interactive lessons are recorded by licensed teachers for students to access online through Edgenuity software. Teachers are available for live instruction and support when needed for independent, self-motivated students who find success working at their own pace, taking quizzes and completing assignments and tests online.
Features for Comparison	This model is for students and families that prefer having a routine in-person and remote school schedule that includes direct interaction with classmates and teachers in a socially-distanced environment combined with Remote Learning on set days.	This model is for students who enjoy, and are successful with, the current online instruction and interaction with their CMSD teachers, and who would do well having a daily online schedule that mirrors what they would experience if attending school in a traditional classroom setting.	This fully online learning model is a full semester option for self-motivated students capable of creating their own e-learning schedule and/or who have supports at home that enable them to successfully complete online coursework that is self-paced with teacher support only when needed.
Grade Levels Served	PreK-12	PreK-12	K-12
Grading	Students are graded by their teachers according to the students' mastery of defined objectives.	Students are graded by their teachers according to the students' mastery of defined objectives.	Students' grades are based on a combination of their self-pacing, completed assignments, quiz and test scores.
Graduation	Students will participate in Commencement at their assigned school as safety guidelines allow. District will also provide a remote graduation option for students and families who do not wish to participate in a live, socially distanced ceremony.	Students will participate in Commencement at their assigned school as safety guidelines allow. District will also provide a remote graduation option for students and families who do not wish to participate in a live, socially distanced ceremony.	Student participate in Commencement at their neighborhood school as safety guidelines allow. District will also provide a remote graduation option for students and families who do not wish to participate in a live, socially distanced ceremony.
Learning Platforms	Students have access to in-person instruction by teachers and to all academic materials and programs used in CMSD schools, including those specific to the academic program of that school as their schedule allows. In addition, students will continue to receive online instruction by 'live' teachers during specified times; Learning Management System enables remote access to learning and teaching through Microsoft Teams, Zoom, Schoology, Seesaw, Google Classroom, classroom Dojo.	Student schedules include online instruction by 'live' teachers during specified times; Learning Management System enables remote access to learning and teaching through Microsoft Teams, Zoom, Schoology, Seesaw, Google Classroom, classroom Dojo.	Students access recorded instruction and learning materials through online platforms, including Edgenuity, Goguardian and Zoom.

Hybrid Opportunity

Defining the Learning Options

	Hybrid: In-person & Remote	Remote Only	Virtual Academy
My School Identity	Your record will reflect attendance at the school building you select. For seniors, your diploma will reflect your assigned CMSD high school.	Your record will reflect attendance at the school building you would have attended if you were in Hybrid or In-Person Mode. For seniors, your diploma will reflect your assigned CMSD high school.	Your records will reflect attendance in a CMSD online program. For seniors, your diploma will reflect your current neighborhood CMSD high school.
Parent Engagement	All qualifying students are at school during the day and parents are engaged through routine communication and engagement activities and parent-teacher conferences. Teachers and families engage through normal school communication channels.	Teachers provide direction and instruction to students, and families are able to check-in to monitor student progress online or communicate with their child's teacher as needed. Teachers and families communicate via phone, email and video conferencing software.	Younger students (K-2) may need more parent involvement in their independent work, while students in grades 3-12 may be independent enough to learn online without much assistance. Families are able to check in and monitor their student's progress 24/7. Teachers and families communicate via phone, text, online and discussion boards, email and video conferencing software.
Progress Monitoring	Teachers monitor progress of each student and provide regular feedback to students and families.	Teachers monitor progress of each student and provide regular feedback with students and families.	Teachers and families monitor pace and progress in real time. Students are able to determine their own pace within the reporting periods
Progress Reports, Report Cards and Accumulated Credits & Promotion	Reports on student progress and credits earned are released per the current Board-approved calendar; students who meet course and grade level expectations receive credit and qualify for promotion.	Reports on student progress and credits earned are released per the current Board-approved calendar; students who meet course and grade level expectations receive credit and qualify for promotion.	Reports on student progress and credits earned are released per the current Board-approved calendar. Progress may be monitored in real time by students and families; students who meet course and grade level expectations receive credit and qualify for promotion.
SAY YES Scholarship Eligibility	All students enrolled continuously in a CMSD high school for grades 9-12 qualify for a full tuition scholarship to a 2- or 4-year college or trade school upon graduation.	All students enrolled continuously in a CMSD high school for grades 9-12 qualify for a full tuition scholarship to a 2- or 4-year college or trade school upon graduation. Choosing the Remote Learning option at their high school does not affect your eligibility.	All students enrolled continuously in a CMSD high school for grades 9-12 qualify for a full tuition scholarship to a 2- or 4-year college or trade school upon graduation. Choosing the Virtual Academy option will not affect high school students' eligibility.
School Schedules	Depending on the students' grades and programs, each will be assigned to either a 2- or 4- day a week school schedule. Students on 2- day schedules work remotely on 2 days and independently on one day; students on 4-week schedules work independently on one day. When in school, students follow a regular bell schedule.	Students work remotely, away from a school building, 5 days a week; students are expected to be in class at specific times.	Students and families have access 24 hours a day, 7 days per week to lessons and tests, and have the flexibility to set their "school" schedule. A minimum of four hours per day on a consistent schedule is recommended. While there is no set schedule, teachers are available to assist Virtual Academy students only during the school day.
School Transfers	Based on circumstances or a preferred choice, families may transfer between any CMSD school as space allows, and can do so anytime by contacting an enrollment specialist or staff at their child's current school.	Based on circumstances or a preferred choice, families may transfer between any CMSD school as space allows and can do so anytime by contacting an enrollment specialist or staff at their child's current school.	Students or families who decide this format is not best for them may transfer at the start of a new semester to any CMSD school with space, and can do so by contacting an enrollment specialist or staff at their child's current school.

Hybrid Opportunity

Defining the Learning Options

	Hybrid: In-person & Remote	Remote Only	Virtual Academy
Special Education Supports	A student's IEP team determines goals and objectives, and a licensed Intervention Specialist provides support as appropriate. For students with low cognitive, verbal and physical ability, the team assists families with determining the best supports for the child within this learning mode.	A student's IEP team determines goals and objectives, and a licensed Intervention Specialist provides support as appropriate. For students with low cognitive, verbal and physical ability, the team assists families with determining the best supports for the child within this learning mode.	A student's IEP team determines goals and objectives, and a licensed Intervention Specialist provides support as appropriate. For students with low cognitive, verbal and physical ability, the team assists families with determining the best supports for the child within this learning mode.
Sports & Extracurricular Activities	Students have access to all school-based activities and may participate in school sports as allowed by the State and offered by CMSD when eligibility is met.	Students have access to all school-based activities and may participate in school sports as allowed by the State and offered by CMSD when eligibility is met.	Students have access to all school-based activities at their neighborhood (home) school and may participate in school sports as allowed by the State and offered by CMSD when eligibility is met.
State Testing	Students are required to meet all State testing requirements and will take tests in the school they attend.	Students are required to meet all State testing requirements and will take tests either in a school building as assigned by CMSD or remotely online when possible.	Students are required to meet all State testing requirements and will sit for tests either at East Professional Center or online.
Support for English Learners (EL)	Tutors are available and assigned to students.	EL tutors are scheduled as needed to work remotely with students.	The virtual programs used in this mode of learning provide translation in over 15 different languages.
Teacher Assignment	Students are most likely to be taught by their first semester teachers, but the current assignment of teachers is not guaranteed for second semester.	Students are most likely to be taught by their first semester teachers, but the current assignment of teachers is not guaranteed for second semester.	Lessons are pre-recorded, so teachers are likely to be mostly consistent with first semester, with the exception of additional support teachers.
Technology & Internet Access	All CMSD schools are equipped with the resources and technology students need in every school building, and CMSD provides devices and Internet access for days when students are in remote instruction. Technology support is provided by the IT Department, school and assigned teachers.	CMSD provides the devices and Internet access students need for full remote instruction and provides access to families to monitor their child's progress and communicate with their child's school and teacher. Technology support is provided by the IT Department, school or assigned teachers.	CMSD provides the devices and Internet access students need for participation in virtual learning and for families to monitor their child's progress and communicate with their child's school and teacher. Students in grades K-5 are provided workbooks for tangible activities, and students in grades 6-12 complete most of their activities online. Technology support is provided by the teacher or resource coordinator.
Technology Needed to Access Instruction	N/A	Any Internet-connected device.	Any Internet-connected device, but Chromebooks are preferred for this mode of learning.

Phasing in the Hybrid Learning Model

CMSD will bring back our most vulnerable student populations to in-person instruction for four or five days per week depending on their assigned schedules.

PHASE 1

CMSD will open self-contained classrooms for the student groups below:

- Select students with moderate to severe disabilities, who receive most of their instruction from Intervention Specialists
- Select 12th Graders who are off track for graduation – based on attendance, grades, credit, engagement, points
- Select Career Technical Education Students (CTE) – students working toward industry credentials and require in-person labs, i.e. welding. CMSD will expand identified CTE programs to provide in-person lab experience
- High School Athletics

PHASE 2

All of the groups listed in Phase 1, plus:

- PreK Students
- Students in grades K-2
- Off Track students in Grade 9 who were not engaging in Remote Learning on a regular basis
- Select 12th Graders who are off track for graduation – based on attendance, grades, credit, engagement, points
- Expand identified CTE programs to provide students with in-person lab experience
- Additional students with disabilities in grades 3-12, as determined by individual student IEP teams

PHASE 3

All of the groups listed in Phase 1 & 2, plus:

- Remaining students in elementary and middle grades
- Remaining students in grades 9-12

Hybrid Opportunity

HYBRID LEARNING MODEL Sample Student Schedules

Hybrid High School

Combination of In-Person & Remote Learning as health and safety levels improve

	M	T	W*	TH	F
SWD MD/AU & Behavior Disorder			*A subset of students with critical needs (MD/AU,CC SC, etc.) may report on Wednesdays for additional support.		
Grades 9-10 (B)					
Grades 9-10 (A)					
Grades 11-12 (A)			Remote Learning/ Planning		
Grades 11-12 (B)					
Students requiring extra support			Rotates Quarterly		

* Early student dismissal on Wednesday



In-person Learning



Remote Learning

Hybrid Opportunity

HYBRID LEARNING MODEL
Sample Student Schedules

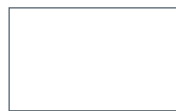
Hybrid PreK-8

Combination of In-Person & Remote Learning as health and safety levels improve

	M	T	W*	TH	F
Select Students with Disabilities in Self-Contained Classrooms			*A subset of students with critical needs (MD/AU,CC SC, etc.) may report on Wednesdays for additional support.		
PreK (full-day and half-day programs)					
Grades K-8 (A)			Remote Learning/ Planning/ Professional Development		
Grades K-8 (B)					



In-person Learning



Remote Learning



COVID-19 Protocols

1 FACE COVERINGS



No face covering, no work, no service, no exceptions. Face coverings are required for staff, students and visitors at all times.

2 HEALTH ASSESSMENTS



Conduct daily health assessments to determine if those entering buildings are healthy.

3 GOOD HYGIENE



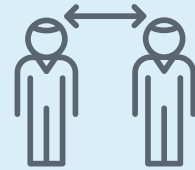
Maintain good hygiene at all times - thorough hand washing and hand sanitizing.

4 CLEAN & SANITIZE



Clean and sanitize workplaces throughout the workday and at the close of business.

5 SOCIAL DISTANCING



Limit capacity to meet social distancing guidelines.

- Establish maximum capacity at 50% of fire code.
- Set appointments for visitors when possible to limit congestion in small spaces.

CMUSD will take the following actions when a COVID-19 infection is identified

- ✓ Immediately report staff, student or visitor infections to the local health department.
- ✓ Work with local health department to identify potentially exposed individuals to help facilitate appropriate communication/contact tracing.
- ✓ Close facility for deep sanitation, as necessary, to clean and sanitize.
- ✓ Reopen in consultation with the local health department.

Health & Safety Guidelines

Safety Guidelines

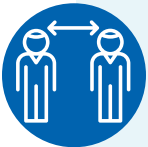
CMSD's Planning and Preparation for the Safe Return of CMSD Staff and Students



Classrooms Furniture will be arranged to reflect social distancing guidelines. Classrooms will be cleaned daily, including high-traffic surfaces. Sharing of classroom materials will not be permitted.



Cleaning and Disinfecting Routine cleaning and disinfecting will occur on all CMSD transportation vehicles and in all schools and work stations including classrooms, bathrooms, cafeterias, break rooms and administrative offices. Classrooms, hallways, entrances and exits will also be cleaned daily, including high-traffic surfaces and areas.



Social Distancing will be required in classrooms and District buildings including during lunch and recess and in common areas. CMSD defines social distancing as a space of 6 feet between two people, in accordance with public health officials.



Face Coverings will be required for all staff and students in Grades PreK-12 throughout the day – some exceptions will apply. Face masks will be provided for teachers and students.



Handwashing/Hand Sanitizing Frequent hand washing will occur throughout the school day. Hand sanitizing stations will be available in all CMSD buildings and schools, including all classrooms.



Transportation Capacity on school buses will be limited to ensure social distancing. Face coverings must be worn on CMSD buses – some exceptions may be made for special populations, as needed. Seating and bus capacity will follow social distancing guidelines. All RTA riders are required to wear face coverings.



Meals will be distributed in individual packaging. Students are likely to eat inside classrooms except in schools where social distancing can be maintained inside the cafeteria. At this time, traditional water fountains will not be accessible.

Health & Safety Guidelines

What To Expect In A Hybrid Learning Environment

When students and staff return to their school building, they will notice a lot of changes with how things are set up and how things will operate.

Classroom doors will be propped open to allow proper ventilation.

Classes will be held outdoors when possible and appropriate.

Physical Education, choir, band, orchestra and other large classes will be reorganized to allow for smaller class sizes and social distancing.



Technology

- CMSD has enabled one-to-one technology for all students (one device per student).
- Devices will continue to be distributed to support high-quality learning both in school and at home.
- Mobile hot spots continue to be available for students who need Internet access.



Physical Education

- Physical contact activities will be prohibited.
- Activities will include exercising, running/walking, jump roping, etc.
- Social distancing guidelines will be followed.
- All equipment will be cleaned before and after each use.



Recess

- Social distancing will be maintained.
- In some instances, only one group of students will be on the playground at a time.



School Transportation

- Face coverings are required on all vehicles
- Students will be assigned a seat.
- Buses will be disinfected at the end of every route.



Extracurricular Activities

- All afterschool clubs and non-competitive activities should be converted to online formats, i.e., student council, chess, art club, etc.
- High school athletics will follow ODE and OHSAA guidelines, while K-8 athletics have been canceled.
- Cheer, band, dance, etc. can occur, but performances may not have audiences. Performances that occur at high school games can be pre-recorded and shown virtually.

District Events

Large group activities such as open houses, back-to-school nights and assemblies will be converted to virtual formats.

Visit [ClevelandMetroSchools.org](https://www.clevelandmetroschools.org) for up-to-date information on the reopening of schools and for guidance documents and resources available to students and families.



School Choice & Enrollment Guidelines

To help maintain safe and healthy schools, classrooms and buses, students were assigned in-person days based on their last name. The District attempted to assign siblings and other students living in the same household to the same days.

Parents and caregivers may request changes in assignments by following these guidelines and processes. All efforts will be made to accommodate requests for changes. Maintaining safe facilities for students and staff is paramount in making changes to assignments.

Parent Opt-Out of Hybrid Assignment

Parents that want their children to remain in Remote Learning, or transfer to the Virtual Academy, may contact the Office of School Choice and Enrollment at 216.838.3675 or their child's current school to request the change in their child's assignment. The deadline for notifying the District of your intent to Opt-Out of Hybrid Learning is March 19.

Parents should note that your child's assignment is subject to change as the District continues to monitor public health data and prepares our staff and schools for a safe return.

Enrollment in the Virtual Academy is for the remainder of the current academic year and not a temporary or intermittent option during Remote Learning periods.

Parent Request to Change the In-Person Hybrid Days

Parents that want to change the in-person days that their children attend should contact your child's school or the Office of School Choice and Enrollment at 216.838.3675 to discuss this possibility.

The District will do its best to accommodate requests based on classroom and transportation availability and capacity.

Parent Request for a Transfer to Another CMSD School

Parents that want to request a transfer to another CMSD school should contact the Office of School Choice and Enrollment at 216.838.3675. We will do our best to accommodate requests based on classroom and transportation availability and capacity.

Parent Request to Change Hybrid Assignment During the Remainder of the School Year

Parents that want to change their assignment from remote to hybrid after the return to school should contact your child's school or the Office of School Choice and Enrollment at 216.838.3675 to discuss this possibility.

The District will do its best to accommodate requests based on classroom and transportation availability and capacity.

What Families Can Expect

Ensuring A Safe, Healthy School Environment

What Students Can Expect

Health & Safety

- Social distancing on school buses, in classrooms, at meal time, during recess and in areas when in school facilities
- Altered school and bus schedules due to decreased capacity
- Staggered entrance and exit procedures to limit the number of students together at one time
- Requirements for PPE in accordance with state and local guidance
- Disposable masks and face shields for special populations, including medically fragile units
- Prepackaged meals to reduce food service lines
- Eating breakfast and lunch in classrooms to avoid large gatherings in the cafeteria
- Monitoring by a school nurse when exhibiting symptoms and until picked up from school
- Access to a designated isolation area when symptomatic to await being picked up from school
- Access to a COVID-19 Hotline for any questions or concerns

Learning & Teaching

- High-quality instruction aligned to content, curriculum and method of delivery
- One-to-one technology
- Training for proper use of digital devices
- A learning management system that will enable access to content and learning from anywhere at anytime

What Families Can Expect

Health & Safety

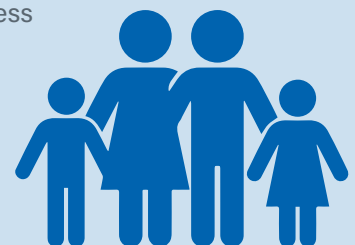
- Social distancing when their child is on a school bus, in a classroom, during breakfast, lunch, recess and other times in school facilities
- Altered school and bus schedules due to decreased capacity
- Required face coverings for students and parents in accordance with state and local guidance
 - A limited number will be provided to each student
 - Parents/caregivers/visitors will be provided masks as needed

Learning & Teaching

- High-quality instruction aligned to content, curriculum and method of delivery
- One-to-one technology

Communication

- Information and routine updates from District and school officials on the Reopening Plan, progress and adjustments
- School-based sign-up for e-alerts, text messages and interactive voice-recorded messages (IVRs) for notifications, health advisories and emergency alerts
- Easy sign-on for CMSD's mobile app and a dedicated website for Reopening updates, school and district news and progress
- Regular communication about your child's progress each quarter

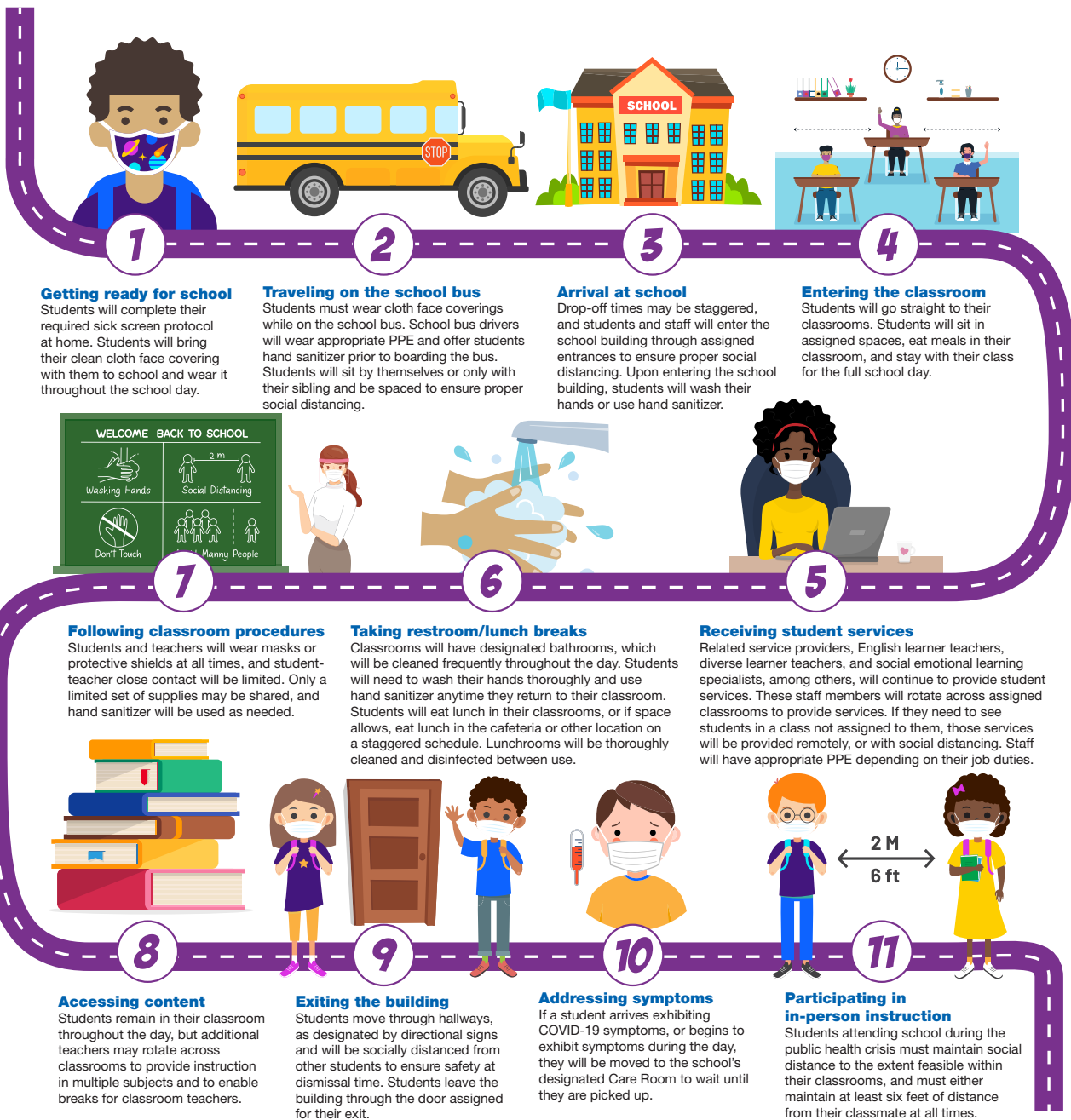


What Families Can Expect

A Day in the Life of a Hybrid Learner

Given the health and safety challenges associated with reopening school during a global pandemic, students, staff, and families must be prepared for how school will look and feel in a Hybrid Learning environment. Although returning, in part, to in-person instruction will feel different at first, CMSD is committed to ensuring the safety of our students and staff. While these changes will impact most of our students, we

are equally committed to meeting the diverse needs of our students. Educators and staff in our Special Education and Multilingual Departments will continue to work directly with students and families to ensure every student is supported in his/her return to a school environment. When students attend school for in-person instruction, this is what they can expect their day to look and feel like:



What Families Can Expect

Technology Use, Distribution and Support

After the COVID-19 pandemic required the transition to remote instruction last spring, CMSD achieved its goal to ensure every CMSD student has a device and every household has Internet access. As we transition from Remote to a Hybrid Learning model, there are limited situations where a student will need access to a second device during in-person learning. The following guidelines have been established to support the technology needs of students and families during Hybrid Learning.

Computer Devices

PreK-Kindergarten

Students in grades PreK-Kindergarten will be provided access to iPad carts by the Early Childhood Office. These students should not bring their home devices to school.

Grades 1-12

Students will be required to bring their previously issued device with them to school for in-person instruction and carry it back-and-forth to school as an essential tool for learning in both Remote and Hybrid instruction.

- Make sure devices are fully charged prior to each of the student's scheduled in-person days
- Schools are prepared for the occasional need to charge student devices or to loan students a device when their device is not working or left at home. These loaner devices are kept at the school for use as needed, and are not available for students to take home.

Computer Device Backpack

Devices issued to students must be protected at all times. Schools will provide students with backpacks before they return to in-person learning and will communicate to parents once the backpacks are available for distribution.

Wireless Network Infrastructure

The wireless network in many schools is being upgraded to improve Wi-Fi coverage and capacity as part of our preparedness for the return to Hybrid Learning. Those Wi-Fi upgrades will be completed March 31, 2021.

IT Support

The technology supports we have provided to families will not change when we transition to Hybrid Learning. The support processes you have used during Remote Learning will continue to be available to you when we transition to a Hybrid model.



What Families Can Expect



School Transportation Policies During Covid-19 Pandemic

Student Transportation Eligibility

In order to comply with recommended safety precautions during the COVID-19 pandemic, the CMSD Board of Education temporarily amended its transportation policy to limit the number of students that can safely board and travel on school buses during Hybrid Learning.

Temporarily, during the pandemic, students who live less than two miles from their school are not eligible for transportation on a yellow bus. Students assigned to ride RTA will receive two (2) single-ride bus tickets per day from their school.

After the pandemic, CMSD will return to our normal transportation policy that enables significantly more students to qualify for yellow bus transportation.

Transportation Assignments

Student transportation assignments were mailed and will arrive in homes the week of February 22.

Transportation Safety

Rules for transportation conduct and safety will be distributed to families, along with an emergency form that needs to be signed by parents to ensure parents and students are aware of the rules, and that drivers have accurate, up-to-date emergency contact information for parents of our riders.

What Families Can Expect

COVID-19 Guidelines for Bus Transportation

- Students must wear a face mask when entering a yellow bus and for the duration of the ride.
- Students must sanitize their hands upon boarding the school bus.
- Students must sit in their assigned seat—one seat per child—and socially distance, as required, with no exceptions.
- Students are permitted only to board the bus at their assigned stop.
- Students are required to wear face coverings and be socially distanced (6-feet) from others at all assigned bus stops.
- Social distancing and face masks are required when boarding and exiting all school buses.

Health Monitoring

Parents are required to check each morning for signs of illness before allowing their child to walk to school or board a school bus. Keep your child at home if your child exhibits:

- temperature of 100.4 degrees or higher.
- any cold or flu-like symptoms, including:
 - Cough
 - Diarrhea
 - Severe headache
 - Vomiting
 - Body aches
 - Runny nose

Tracking Your Child's Transportation

Families can track their child's transportation vehicle in real time using CMSD's mobile Bus Tracker. To sign up for Bus Tracker, click on this link for [Edulog Parent Portal](#)

CMSD Transportation Hotline

216.838.4BUS



What Families Can Expect

Behavior During Transport

- Students should show the same respect for bus drivers that is required for their teachers and principals at school.
- Students should follow the instructions of the driver or attendant at all times.
- Disrespectful behaviors such as pushing, shoving, fighting, shouting and swearing are prohibited on the bus and at all bus stops. Any student who is observed or reported for such conduct will face disciplinary action.
- Students face consequences if they engage in prohibited behaviors as outlined in the *Student Code of Conduct*, including but not limited to:
 - bringing food or drinks onto the bus or eating/drinking on the bus.
 - bringing drugs, tobacco, alcohol, weapons, animals or anything not conducive to safe riding onto the bus.
 - littering the bus, or throwing items out of the windows or at other vehicles or persons.
 - carrying harmful or illegal items on the bus, including drugs, tobacco, alcohol, weapons, animals or anything not conducive to safe bus riding.
- Students should not lean from seats, face backward during transport.
- Students should keep their hands to themselves at all times.
- Students must keep the aisle clear so the driver can see out the back of the window.
- Teasing, taunting or disturbing the driver or other riders, as well as people outside the bus, are prohibited.
- Students should keep their head, feet and arms inside the bus and inside assigned seat at all times.
- Vandalizing the bus in any way risks the student or his/her family being liable for damages.
- Students should not touch emergency latches or doors unless there is an actual emergency that requires an emergency exit.
- Use of electronic devices (cell phones, head sets, CD players, iPods, laptops, etc.) is strictly prohibited, and must be stored in a backpack, pocket or purse upon entering the bus and during transport.
- Students should remain quiet at all railroad crossings, and listen for the driver's instructions when approaching and stopping at a railroad crossing.
- Improper conduct during bus transportation may result in suspension or expulsion from school transportation and/or disciplinary action as defined in the *Student Code of Conduct*.



What Families Can Expect



Safety & Security in CMSD Schools

CMSD's Division of Safety and Security is well prepared to ensure a safe and orderly environment for learning when our schools reopen for Hybrid Learning. Our safety teams have worked closely with local health and safety officials to implement practices that align with COVID-19 policies and procedures for the safe operation of our schools. Students, staff and families all play a part in keeping our schools safe for all.

Students and families should expect the same visual presence of our safety and security officers at the main entrance of our schools during arrival and dismissal of our students, and throughout the school day.

Ensuring a Safe Arrival and Learning Environment

Prior to arrival, and throughout the school day, our safety and security staff will:

- patrol the perimeter of the building to identify any suspicious vehicles or objects and check all metal detection equipment daily.
- require all students and visitors to enter through the main entrance designated for each location.
- ensure that all students and visitors are socially distanced and following the floor markers and signage to ensure safety.
- staff security checkpoints to assist and process students that are tardy and to manage any incoming visitors.
- periodically sanitize all detection equipment and work areas.
- support educators as needed in directing students to class, monitoring hallways during meal pickup and classroom breaks, assisting at recess and other active areas during the school day.

What Families Can Expect

Ensuring Safe Dismissal of Students

Safety & Security Staff is positioned to support school staff with a staggered bell schedule to ensure a safe and orderly dismissal of students at the end of the school day and will work cooperatively with school staff to:

- ensure face masks and social-distancing requirements are followed as students line up for departure and for boarding buses.
- clear hallways after each departing class until the building is cleared each day.
- clear the building grounds in preparation for dismissal of the next class.
- ensure bus riders wait in the designated area, as assigned by building administrators.
- enforce bus rules for boarding and exiting buses, as outlined in Transportation safety guidelines.

When buildings reopen, our Safety & Security team is fully prepared to keep students and staff safe, and to implement routine safety drills to support emergency preparedness. CMSD security officers will:

- test building fire alarms to ensure they are fully functional and audible.
- conduct fire evacuation drills, including a drill during the first 10 days of our return to Hybrid Learning.
- resume monthly fire evacuation drills.
- conduct all other drills as scheduled, including emergency lockdown/evacuation, tornado, etc.



What Families Can Expect

Parents and Caregivers Guide to Attendance

With COVID-19 safety precautions still in effect throughout the state, the Ohio Department of Education has provided clear guidance on how schools should measure attendance when students are working remotely. This document outlines the evidence of participation that teachers will use to determine when students are present each school day.

Hybrid Attendance In-person and Remote Learning

- Teachers will take in-person attendance for the first period class, or within the first 120 minutes of the day in eSchool Plus daily on in-person days.
- Schools are responsible for calling the parent or caregiver if a student is absent for the first 120 minutes of the day.
- Per Ohio Department of Education guidelines, students are not permitted to make up an in-person day by completing an online session.
- If a student fails to come to school on an in-person day, he or she will be marked absent.
- Secretaries will document tardy arrivals and early departures in eSchool Plus.
- Tardy arrivals will continue to be relevant in Hybrid Learning when students are required to physically attend school.

Synchronous Attendance

Teacher-led live lessons

Students are required to log in to the live session by 8:30 a.m. Students are considered present if logged in to the Learning Management System when teachers are providing live instruction.

Asynchronous Attendance

Student-led recorded sessions or independent learning based on teacher's instructions

- When students are unable to attend the live session, the parent or caregiver should communicate with the teacher and arrange to attend the recorded lesson.
- When students attend the recorded lesson, they are marked present. Evidence to support when an asynchronous learner is present:
 - Logins to the Learning Management System
 - Smartphone photos from parents to measure activity or progress
 - Emails, phone chats, conference calls, text messaging and meetings in the LMS, video chats
 - Making attempts to complete assignments
 - When students are working without technology, the District is responsible for providing written work/packets. Families are responsible for submitting work on time to count as present.

Parent Responsibilities

Maintain strong communication with your child's school:

- Update your contact information with an email address and reliable phone numbers
- Continue to call students off at the school's main phone line when your child will be absent.
- Communicate with teachers when your child is struggling with online lessons.
- Communicate with teachers when your child is unable to attend the live lesson but will attend the recorded session.
- Let the teacher or a school team member know if you experience difficulties that prevent your child from logging into school.

Review the Remote Learning rules with your child:

- If your child is ill on a Remote Learning day, but able to attend class and meets the attendance requirements, he or she will be considered present.
- When your child is required to attend in person, he or she cannot substitute an online lesson for an in-person day.
- On in-person days, students are considered tardy when arriving after the first 30 minutes of the day.
- Create a routine schedule during school hours to make it easier for your child to learn and study.
- A parent or caregiver's signature is required to sign a student out for early departure on in-person days.

What Families Can Expect

Guidance for Student Athletes and Families

In alignment with public health guidance at the time we reopen schools for Hybrid Learning, CMSD will offer the following OHSAA spring sports for high school students.

- Boys Tennis
- Softball
- Baseball
- Boys/Girls Track & Field

In preparation for the spring sports season, school principals, athletic directors and coaches are working collaboratively on designating safe spaces for in-school and out-of-school athletes to meet prior to the start of practice and games.

Parents will receive an invitation to Parent Night where information will be shared on the dates and times for designated practices for each of these sports, including expected arrival times for athletes who are in both Hybrid and Remote Learning.

Parents and athletes will also be briefed on safety guidelines for practice and games, COVID-19 guidelines for attendance at games and other pertinent information.

GPA requirements for athletic eligibility have been temporarily suspended. Any CMSD high school student may participate regardless of his/her GPA.



What Families Can Expect

Interscholastic Extracurricular Eligibility

The District prohibits students in grades 7 through 12 from participating in interscholastic extracurricular activities if they fail to meet all of the following eligibility requirements:

- 1. The student must have either a grade point average of 0.1 or higher in the previous grading period, or a cumulative grade point average of 0.1 or higher;**
- 2. The student must be enrolled during the current grading period in at least five one credit courses that count toward graduation;**
- 3. The 9-12 grade student must have passed in the last grading period at least five one credit courses that count toward graduation (effective beginning with grades received in the first grading period of the 2021-2022 school year), and the 7-8 grade student must have passed in the last grading period at least four courses.**

Any student who has received a failing grade for any class or course in the School District's graded course of study for the previous grading period will be allowed to participate in any interscholastic extracurricular activity, if the student has met all other eligibility requirements.

- The Administration shall develop a uniform mechanism for determining the eligibility of students enrolling in the seventh and/or ninth grades for the first time when such students do not have a formal GPA calculation at the time of enrollment.
- Interscholastic extracurricular activities are defined as District and/or school-sponsored student activities involving more than one school or school district.
- Principals shall assure that study tables and tutoring are made available to all athletes and other students involved in extracurricular activities.
- Failure to comply with the grading period eligibility requirements results in extracurricular interscholastic ineligibility for the succeeding grading period.
- A student with an IEP may be exempt from the grading provisions set forth in this policy, if such an exemption is advisable according to the IEP.



Services and Supports

Special Education Hybrid Learning FAQs

Q. What does “Hybrid Learning” mean for my child with special needs?

A. In a Hybrid Learning model, the student spends assigned days in school (in-person learning) and assigned days in Remote Learning.

Students receive regular education and special education services on assigned in-school days while engaging in Remote Learning on the other days. This Remote Learning may be live (synchronous) instruction or not live (asynchronous), or a combination of both, as assigned.

Q. With a requirement for social distancing, what happens for students with a 1:1 aide included in their IEP?

A. Your child’s classroom will implement health, safety, and hygiene protocols that will allow for safe interaction between your child and his/her teachers and support staff, including 1:1 paraprofessionals. Your child will also learn how to follow safety protocols, such as hand washing and mask wearing.

Q. I wish to keep my child in a fully Remote Learning environment. Can I do that?

A. Yes. Once Hybrid Learning begins, there will still be a fully Remote Learning option available for any student, including students with significant disabilities. This does not include home instruction (a teacher coming to the home) unless the student

is eligible for medical reasons. Your child may be assigned to a different class or Intervention Specialist if opting for a fully remote option.

Q. What if my child needs an amendment (change) to the current IEP?

A. IEP teams may meet at any time to discuss amendments to the IEP. The District will be implementing a Fluid Learning Form, which will be an attachment to the IEP. The form will explain how services will be adapted from the current IEP when the student is receiving education in Remote Learning or Hybrid Learning. This Fluid Learning Form will be discussed at upcoming IEP team meetings. This form is important for IEP teams to discuss and implement, especially for students who are not making adequate progress in their current learning environment.

Q. During Hybrid Learning, can the IEP team consider a change of placement for my child?

A. It is most important that your child receive the services, accommodations and supports in his/her current IEP, with any adaptations that are needed for hybrid or Remote Learning environments. If at any time you believe your child is not making progress in the current services or placement, or If at any time you believe your child is not making progress in the current services/placement, or if you have concerns, you are encouraged to request an IEP team meeting to discuss your concerns.

Services and Supports

Special Education Hybrid Learning FAQs

- Q.** I am concerned about my special needs child falling behind because of the pandemic. How is the District addressing this?
- A.** All students receive an IEP Progress Report every 4-5 weeks to share progress toward mastery of goals and objectives. If a student is not making progress, the IEP team will convene to discuss changes to the IEP (through the Fluid Learning Form) that may be needed in order to ensure that the student will continue to make progress even during the pandemic. The District is also committed to discussing and implementing services to address unfinished learning once we are able to resume full-time, in-person learning for all students.
- Q.** My special needs child requires transportation. Can he/she still receive it?
- A.** Once Hybrid Learning begins, students with transportation as a service in their current IEP will continue to receive it on in-person learning days.
- Q.** Is my child allowed to transfer schools?
- A.** The Special Education Office will follow District guidance for transfers during Hybrid Learning. Please contact 216.838.3675 for any questions or concerns about transferring from one school to another.



Services and Supports

Homeless Children & Families

Project ACT 216.838.0210 | ProjectAct@ClevelandMetroSchools.org

The public health crisis has caused hardship to many families in Cleveland, leaving many in need of support for basic necessities, including food and affordable housing. Assistance is available for families who are in shelter and for those staying doubled-up while their children are attending school.

In accordance with the federal McKinney-Vento Act, children and families are considered homeless if they do not have a “fixed,” regular and adequate nighttime residence, or are:

- living in a shelter, including emergency and transitional shelters for domestic violence and runaway/homeless youth shelters;
- living doubled-up with a friend, relative or someone else due to eviction, foreclosure, natural disaster or economic hardship;
- staying in a motel, hotel, trailer park or campground because they have nowhere else to go;
- staying in substandard housing;
- living in places not ordinarily used for sleeping, including cars, parks, public places, abandoned buildings or bus/train stations;
- abandoned in a hospital;
- children and youth not living at home, who:
 - were asked to leave home by a parent/legal guardian.
 - left home without consent of parents (runaways).
 - are living doubled-up without a legal guardian due to economic reasons or due to lack of formal custody papers while parent(s) are incarcerated, hospitalized or in a rehabilitation center.

Only doubled-up families and unaccompanied youth are required to enroll by [clicking on this link](#).

School Supports for Homeless Children & Youth

Project ACT

216.838.0210

Monday – Friday | 8am–5pm

Coordinated Intake for Shelter

216.674.6700

Monday – Friday | 8am–8pm

Bellefaire for Unaccompanied Youth

216.570.8010 | After 5pm & on weekends

United Way

Dial 211 | 24/7 Hotline

Project ACT is a Cleveland Metropolitan School District program dedicated to supporting homeless children and families with support in every grade, including life skills coaches at select schools, referrals for counseling services, help with obtaining birth certificates, immunization records, medical coverage, food stamps and social security.



Services and Supports

Homeless Children & Families Frequently Asked Questions

Q. How do I keep my children in school if I am in a shelter?

A. Your shelter caseworker will identify and refer your children to Project ACT and electronically send the documents needed to enroll your child in school. During Remote Learning, all students, including homeless students, are provided with a digital device and a hot spot to enable Internet access.

Q. Does my child have to change schools when we are homeless or in transition?

A. No. You have the right to keep your children at the school they were originally attending while in transition, or you may move to a school closer to the shelter, if you choose.

IMPORTANT TO NOTE: If you are placed in an overflow shelter until alternate shelter placement becomes available, call Project ACT for assistance with your child's school enrollment at 216.838.0210.

Q. What should I do when I leave a shelter?

A. It is important that you notify Project ACT and your child's school to provide both with your new address and updated phone number. Families moving into permanent housing are required to submit proof of residency to the school and to Project ACT. Children already being serviced by Project ACT will remain in the program through the completion of the school year.

Q. Can I keep my children in school if I am living doubled-up with friends or relatives until I find a temporary or permanent residence?

A. You have the right to keep your children in the school they are attending or move them to a school closer to where you are staying. Be sure to call the Project ACT office at 216.838.0210 to ensure that we have the most current address phone number where your child is staying while your family is in transition.

Q. Can I enroll my child in a CMSD school if I am living doubled-up with friends or relatives until I find a temporary or permanent residence?

A. Yes. However if you are enrolling a child for the first time in a CMSD school, call Project ACT at 216.838.0210 to assist you with obtaining the necessary documents, including Immunization records, academic records, birth certificates, etc. Project ACT will help you obtain many of these documents, including court/custody records, if applicable.

IMPORTANT TO NOTE: If you move from one doubled-up situation to another, call Project ACT to complete new enrollment forms to ensure your child's address and contact information are updated at his or her school so you can be reached in the event of emergency.

Q. If I am not the legal guardian of the child(ren) staying with me, am I able to enroll the child(ren) into school?

A. Yes. Children and youth who are staying with a host family without a legal guardian due to the loss of housing, fire, economic hardship, incarceration, or similar reasons are covered by the McKinney-Vento Act. The caregiver must contact the Project ACT Office to enroll the child(ren) in school. Project ACT will assist with obtaining the required documentation from prior schools and medical facilities.

Services and Supports

English Learners (EL)

CMUSD is committed to providing all English Learners with the differentiated supports needed to ensure every student receives the services required to become proficient in the English language.

While a Remote Learning environment limits face-to-face interaction, every English Learner will learn content-specific, academic language across all subjects and will engage in conversation in every subject and language domain: Reading, Writing, Listening and Speaking.

What EL Families Should Know and Expect

- Multilingual Program Managers staff school clinics to address the differentiated needs of students.
- Schools are equipped with English as a Second Language (ESL)-certified and bilingual staff to provide academic and language support.
- A Multilingual Welcome Center is staffed to provide remote assistance to students and families.
- Enrollment specialists are available to help families register for school.
- Multilingual Family Coordinators are trained to provide crisis intervention support for families.
- School staff collaborates with community agencies to ensure EL families have the resources and assistance needed for success.
- Students and families have access to native language communication at school.
- Language services are delivered by TESOL (Teaching English to Speakers of Other Languages), bilingual certified teachers.



Call the Multilingual Multicultural
Education Office at
216.838.0140 for assistance.



Staying Connected to CMSD



- Update your contact information with current cell phone numbers and email addresses to receive e-alerts, text messages and emergency notifications this year.
- Visit the CMSD website at [ClevelandMetroSchools.org/Hybrid](https://www.ClevelandMetroSchools.org/Hybrid) for all COVID-19 information and back-to-school updates.
- Like us on Facebook, follow us on Twitter and Instagram to stay current with what's happening in our schools.
- Enroll today and let our CMSD enrollment specialists help you with Preschool and Kindergarten registration or with making the best school choice for the 2021-22 school year.
- Save the COVID-19 Hotline number in your contact list: **216.838.9980**
- For REAL TIME transportation updates go to [ClevelandMetroSchools.org/BusTracker](https://www.ClevelandMetroSchools.org/BusTracker) to download the Edulog Parent Mobile Portal app today!

Family Supports

COVID-19 Health Hotline	216.838.WELL (9355)
Rapid Response Hotline for Social & Emotional supports	216.838.2273
IT Computer support	216.838.0440
School Choice & Enrollment Hotline including other Remote Learning options	216.838.3675 or visit ChooseCMSD.org
Early Childhood	216.838.0110
Family and Community Engagement	216.838.3223
Multicultural Multilingual support	216.838.0140
Special Education Office	216.838.7733
Project ACT Foster & Homeless support	216.838.0210
All other District-related supports	216.838.0000
Community Resources: Social Services (food, health, housing, basic needs) 24 Hour Suicide Hotline Domestic Violence Hotline Ohio Mental Health Crisis Hotline	Dial 211 216.623.6888 216.391.4357 Text 4HOPE to 741741
Safety and Security Dispatch	216.838.7777