



September 1, 2022

Dear Parent, Teacher Staff:

The Division of Traffic Engineering will make the following changes to the operation of West 57<sup>th</sup> Street (Franklin Blvd. – Bridge Avenue). These changes are specifically designed to improve safety during morning arrival and afternoon dismissal at Waverly School PreK-8 located at 1805 West 57<sup>th</sup> Street.

- Signage will be installed at West 57<sup>th</sup> St. and Franklin Blvd. restricting traffic from entering West 57<sup>th</sup> St. southbound during the hours of 8:30 AM to 10:00 AM and 3:00 PM to 4:30 PM school days only.
- Signage will be installed at Franklin Blvd. and West 57<sup>th</sup> St. restricting left turns on to West 57<sup>th</sup> St. during the same hours.
- Signage will be installed at Franklin Blvd. and West 57<sup>th</sup> St. restricting right turns on to West 57<sup>th</sup> St. during the same hours.

The purpose of these changes is to create a one-way traffic pattern in the northbound direction for West 57<sup>th</sup> St. so parents can drop off and pick up students. The new traffic pattern will enhance the safety of the area by eliminating vehicle/vehicle conflicts as well as reducing the vehicle/pedestrian conflicts. The enclosed map illustrates the changes.

**This will be effective the week of October 3, 2022.**

If you have any questions, please contact Robert Mavec at (216) 664-3195.

Sincerely,

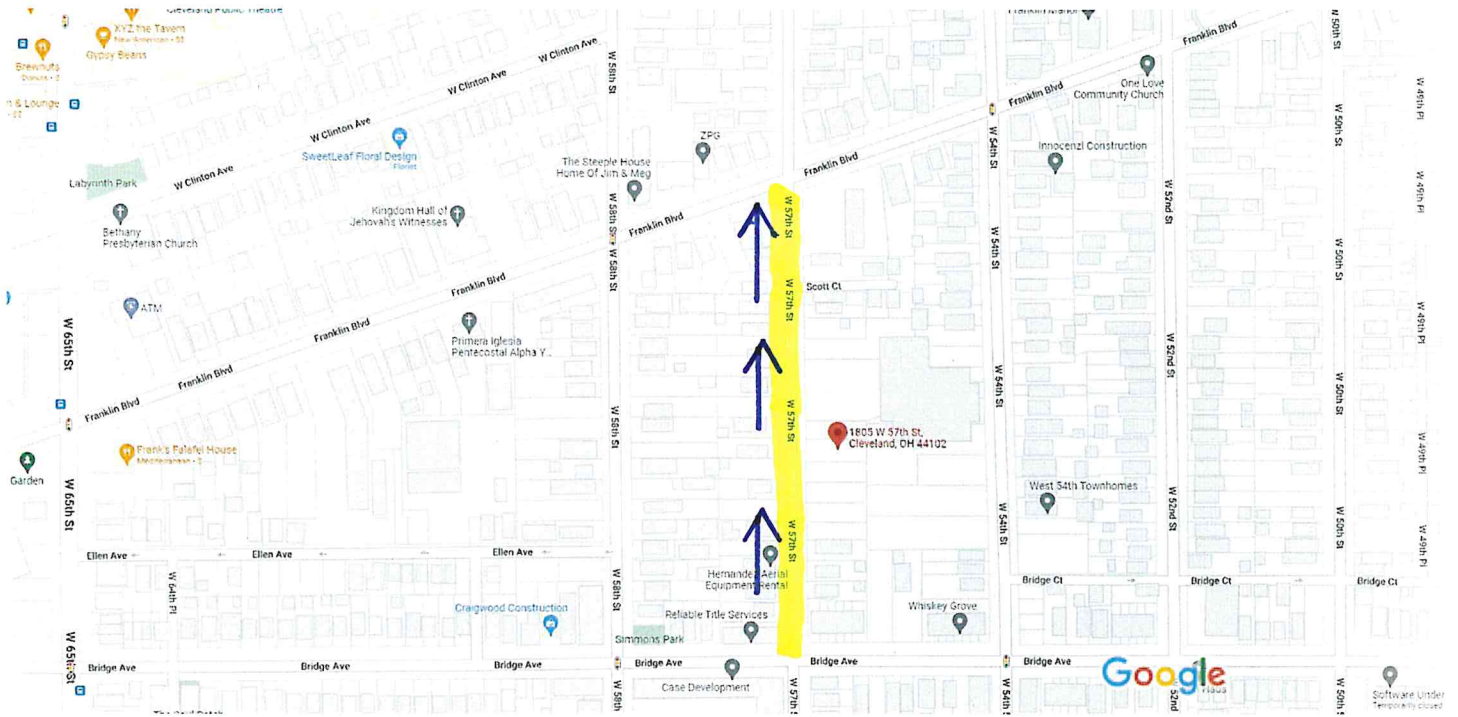
A handwritten signature in blue ink, appearing to be "R. Mavec".

Robert Mavec, Commissioner  
Division of Traffic Engineering

CC: Robert Mavec, Commissioner, Division of Traffic Engineering  
Jenny Spencer, Council Member, Ward 15  
Sommer Edwards-Fountain, Principal, Waverly School  
Regina Leverett, Engineer  
File



1805 W 57th St  
Waverly School PreK-8



Map data ©2022 Google 100 ft



1805 W 57th St  
Cleveland, OH 44102



Directions



Save



Nearby



Send to  
phone



Share

F7JG+P3 Cleveland, Ohio