

Joseph M. Gallagher PreK-8 School

Joseph M. Gallagher (Temporary School Location)
4016 Woodbine Avenue
September 21, 2022 – 6:00 pm

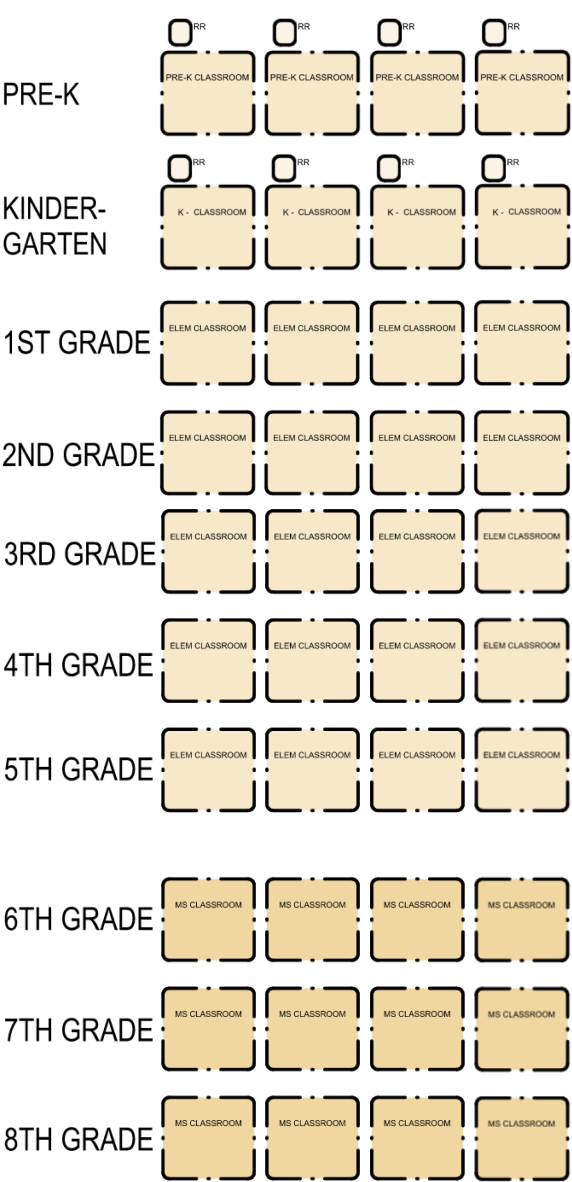
www.clevelandmetroschools.org/Segment8

Renovated Joseph M. Gallagher PK-8 School

The renovated school will offer educational programming for 1,020 pre-kindergarten through eighth grade students. The school was originally built as 126,816 square foot structure in 1977. A second-floor classroom addition of 7,640 square feet was constructed in 2000. Renovated building will be 146,982 square feet which includes proposed small addition of 965 square feet facing Franklin Boulevard.

The interior includes 4 classrooms per grade level, PreK-8, and over 15 flexible classrooms throughout the building designed to accommodate specialized needs. Additionally, there are 4 Extended Learning Areas for collaborative projects, a Project Lab, a Computer Lab, two Art Rooms, two Music Rooms, a Media Center, a Gymnasium, and a Student Dining. The Media Center, Gymnasium, and Student Dining are designed to support community use after hours. Space is also allocated for administration, physical education, support spaces, food services, custodial spaces, and other building services.

Exterior programming includes 111 parking spaces (to accommodate all teachers and staff), 65 bicycle spots, two playgrounds for different age bands, and underground stormwater management. Existing green space, on the corner of Bridge Ave. and West 69th Street, will remain and will be enhanced for students' and community use. The project will be pursuing LEED Silver Registration and will include sustainable features throughout.





Project Scope

- Complete renovation of Joseph M Gallagher PreK-8 School
- The school was originally built as 126,816 square foot structure in 1977
- A second-floor classroom addition of 7,640 square feet was constructed in 2000
- Renovated building will be 146,982 square feet structure
- Proposed administration addition 965 sf
- Proposed media center expansion 1,029 sf
- Existing site improvements 4.86 acres
- Reprogramming of educational spaces for projected 1,020 pre-kindergarten through eighth grade students



Scope of Renovation

Building Improvements

- New roofing, heating, air-conditioning, electrical, lighting, security, emergency egress lighting, fire alarm, sprinkler, wi-fi, sound, paging and audio/visual systems. Additionally, new plumbing fixtures, windows, flooring, ceilings, paint, insulation in exterior walls, elevator, wheelchair lift to gym platform, ADA door assists, interior doors, hardware, signage, exterior doors, emergency generator, guardrails, handrails, and furniture throughout.
- Waterproof all areas below grade
- Replace spalled brick and gym wall repairs

Site Improvements

- New repaved parking and service areas, courtyard pavers, bus and vehicle drop-off areas, green space enhancement, landscaping, fencing, two playgrounds, underground stormwater management

Spring '22

Spring '22 / Winter '22

Spring '23 / Summer '24

2024-2025
School Year

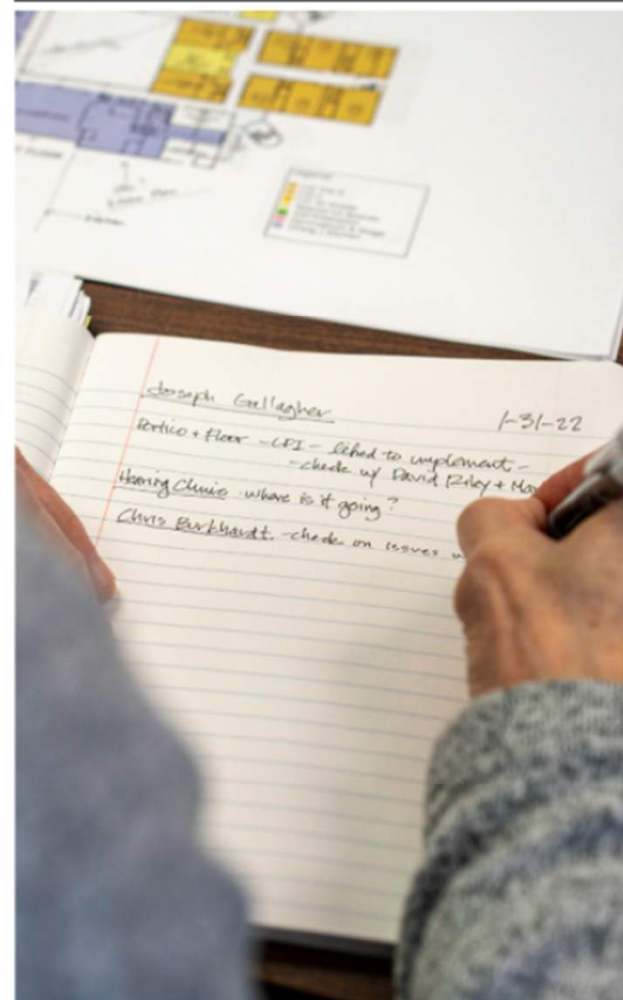
RESEARCH /
PROGRAM

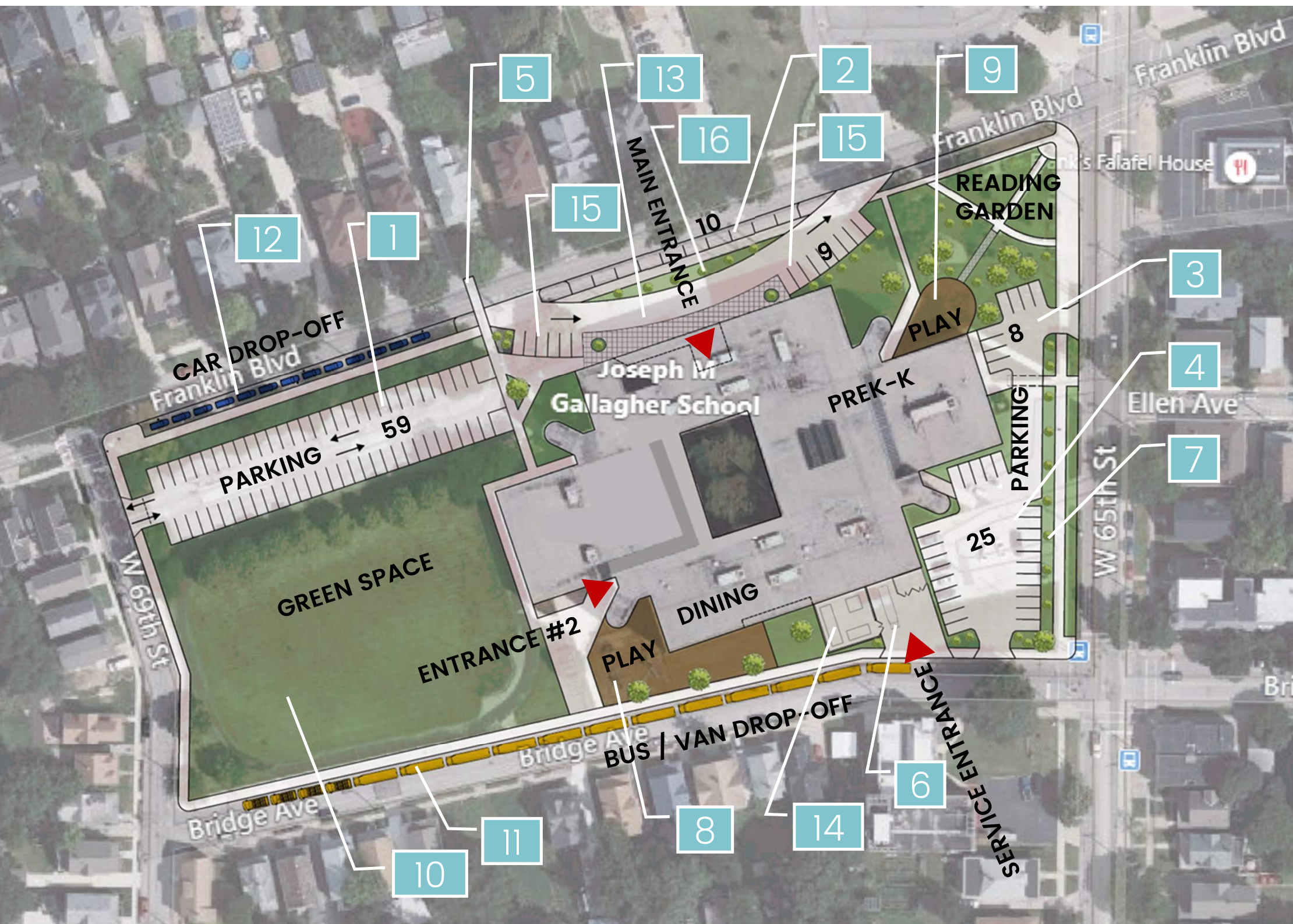
DESIGN



CONSTRUCTION

RENOVATED
SCHOOL
REOPENS





Site Elements

1. Staff parking (59 spaces)
 2. Visitor parking (10 spaces)
 3. PreK-K parking (8 spaces)
 4. Staff/Service parking (25 spaces)
 5. New crosswalk
 6. Receiving/Service area
 7. New landscape buffer
 8. Extended existing playground
 9. New PreK-K playground
 10. Refreshed green space TBD
 11. Bus/Van drop-off
 12. Car drop-off
 13. Drop-off/pick-up drive
 14. Mechanical yard
 15. Administration parking (9)
 16. Landscape buffer and decorative fence in front of pick-up drive
- Total Parking (111 spaces)



Site Elements

1. Staff parking (59 spaces)
 2. Visitor parking (10 spaces)
 3. PreK-K parking (8 spaces)
 4. Staff/Service parking (25 spaces)
 5. New crosswalk
 6. Receiving/Service area
 7. New landscape buffer
 8. Extended existing playground
 9. New PreK-K playground
 10. Refreshed green space TBD
 11. Bus/Van drop-off
 12. Car drop-off
 13. Drop-off/pick-up drive
 14. Mechanical yard
 15. Administration parking (9)
 16. Landscape buffer and decorative fence in front of pick-up drive
- Total Parking (111 spaces)



Recommended turn restrictions on West 69th during dismissal only:

1. No southbound turns onto W. 69th from Franklin
2. Right turn only from school parking lot driveway onto W. 69th
3. No northbound turns onto W. 69th from Fir or Wakefield
4. The only exception to full one-way restrictions would be on-street vehicles who are oriented southbound, north of Bridge, and need to exit during dismissal

 Pedestrian Access
 Vehicular Access



Landscape Elements

Reading Garden to remain and be visually connected to the new playground which will be accessible to the community after school hours.

Green Space to remain and to be enhanced and accessible to the community after school hours.

New planting list will be generated further into design, as well as site furnishings.

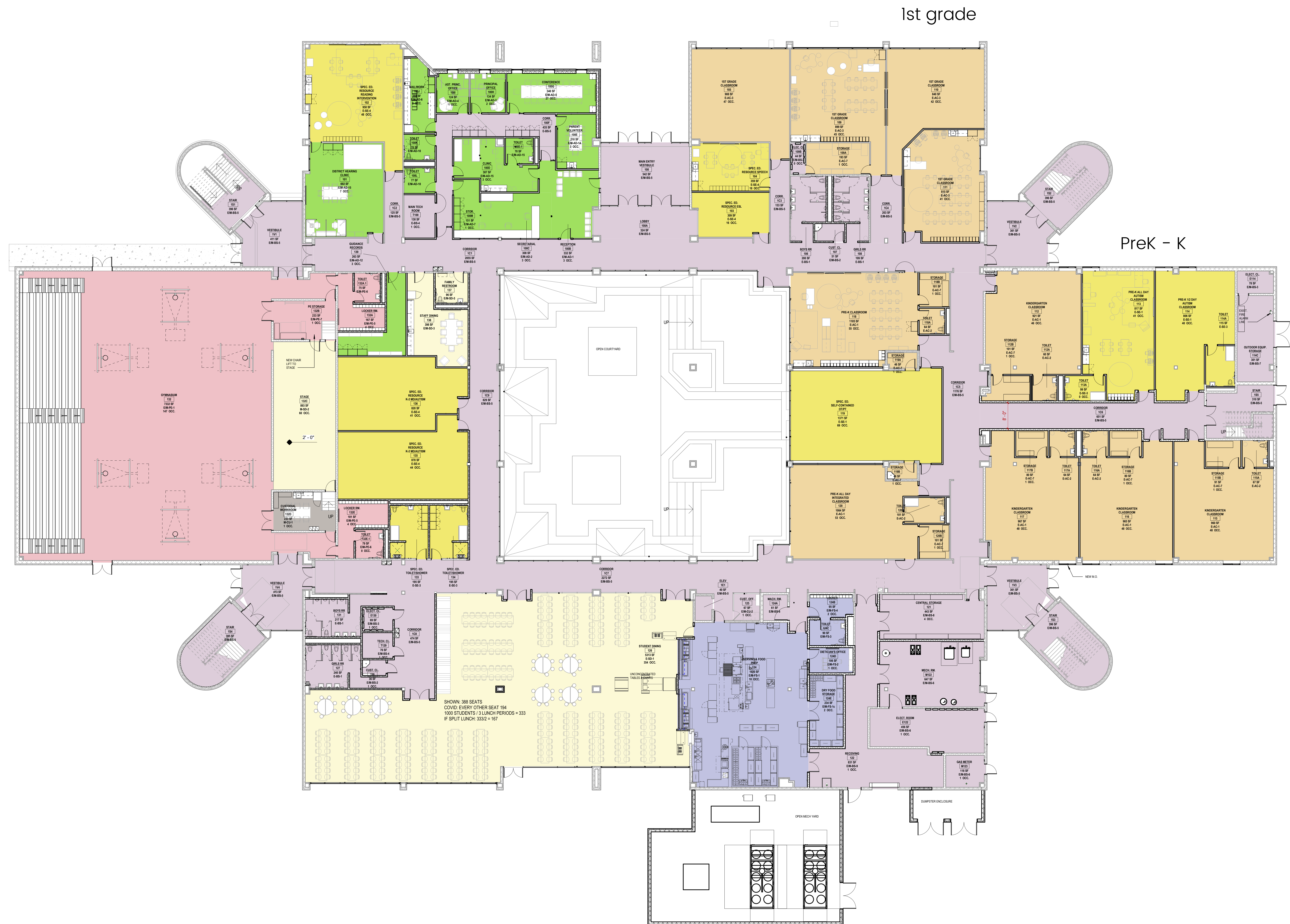
Existing trees to remain.
If injured during site improvements, new trees to be planted.

4' Tall ornamental fence



COLOR LEGEND

- ACADEMIC CORE
- ADMINISTRATIVE
- BUILDING SERVICES
- CUSTODIAL
- FOOD SERVICES
- MUSIC
- PHYSICAL EDUCATION
- SPECIAL EDUCATION
- STUDENT DINING
- MEDIA CENTER
- ART



Cleveland Metropolitan School District
Renovated Joseph M. Gallagher PK-8 School
First Floor Plan – August 17, 2022

COLOR LEGEND

- ACADEMIC CORE
- ADMINISTRATIVE
- BUILDING SERVICES
- CUSTODIAL
- FOOD SERVICES
- MUSIC
- PHYSICAL EDUCATION
- SPECIAL EDUCATION
- STUDENT DINING
- MEDIA CENTER
- ART



Cleveland Metropolitan School District Renovated Joseph M. Gallagher PK-8 School Second Floor Plan – August 17, 2022

ACADEMIC CORE	100%
ADMINISTRATIVE	100%
BUILDING SERVICES	100%
CUSTODIAL	100%
FOOD SERVICES	100%
MUSIC	100%
PHYSICAL EDUCATION	100%
SPECIAL EDUCATION	100%
STUDENT DINING	100%
MEDIA CENTER	100%
ART	100%





Existing windows

Brick Replacement

Existing spalling and cracked brick to be replaced to match existing color



Proposed rendering of new windows

Window Replacement

Existing single pane, non-insulated windows to be replaced with thermally insulated, energy efficient, tinted and transparent window systems with integral blinds



**Cleveland Metropolitan School District
Renovated Joseph M. Gallagher PK-8 School
Proposed Rendering from Franklin Blvd.**



BRK-2: BLUE GLAZED UTILITY BRICK,
GLEN GERY, BELDEN





**Cleveland Metropolitan School District
Renovated Joseph M. Gallagher PK-8 School
Before & After – Rendering from Franklin Blvd.**





NORTH ELEVATION – FACING FRANKLIN BLVD.

3 STORY PORTION IS 44' TALL



EAST ELEVATION – FACING WEST 65TH ST.



BRK-2: BLUE GLAZED UTILITY BRICK,
GLEN GERY, BELDEN



GLZ-2: BLUE LAMINATED GLASS,
SAFLEX & VANCEVA COLORS PVB INTERLAYERS



Bone White



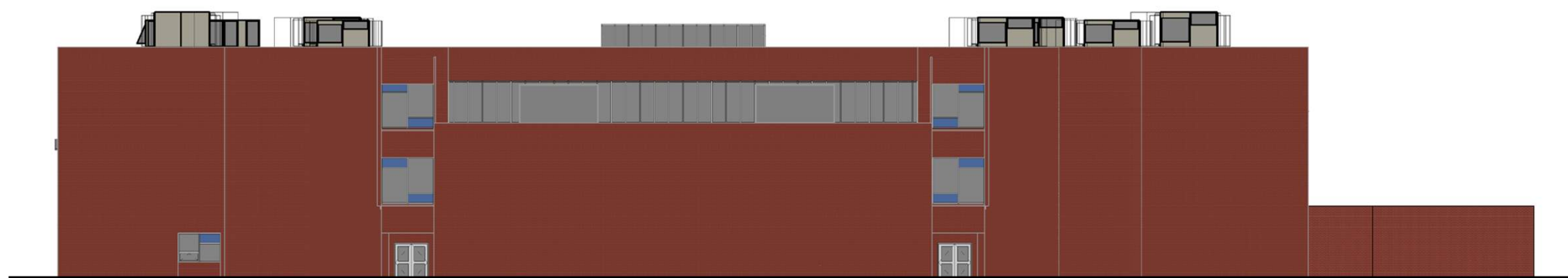
ACM-1: ALUMINUM COMPOSITE METAL PANEL,
ALUCOBOND, BONE WHITE

AWU-CW-SF: ALUMINUM FRAMES, BONE WHITE,
EFCO, KAWNEER

**Cleveland Metropolitan School District
Renovated Joseph M. Gallagher PK-8 School
Proposed Elevations**



SOUTH ELEVATION – FACING BRIDGE AVE.



WEST ELEVATION – FACING WEST 69TH ST.

Cleveland Metropolitan School District
Renovated Joseph M. Gallagher PK-8 School
Proposed Elevations



NORTH ELEVATION – FRANKLIN BLVD. SIGNAGE



EAST ELEVATION – WEST 65TH ST. SIGNAGE

Cleveland Metropolitan School District
Renovated Joseph M. Gallagher PK-8 School
Proposed Signage