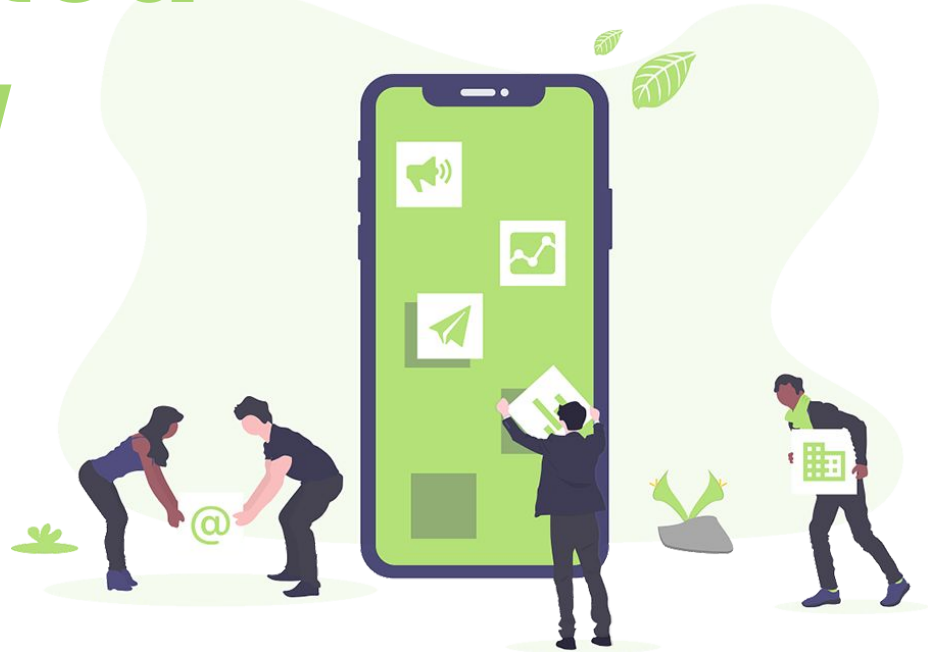
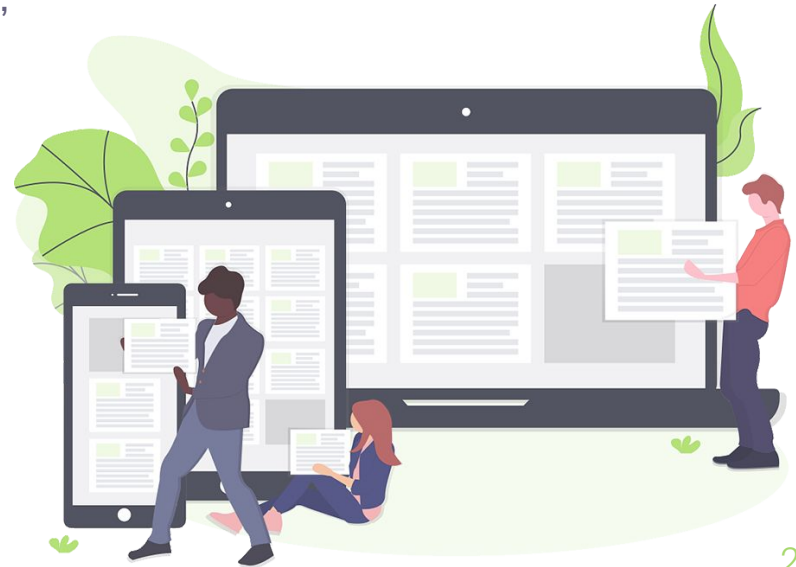


Getting Started with Seesaw Class for Families



Welcome Families!

As we continue our Distance Learning journey, teachers may begin using Seesaw Class to assign learning activities and send announcements for students. This is a brief tutorial to support families with signing in and using the Seesaw Class app to complete activities.



The [Family App](#) gives family members a view of what their child is working on in the classroom. Family members can comment on student work, view announcements, and message their child's teacher. Family accounts cannot respond to Activities or post directly to a student journal.

In order to complete Activities and post student work at home, students need to log in to the [Class App](#). Students can also login at app.seesaw.me by selecting 'I'm a Student'. Students can only complete assignments and post work from the Class App.



Signing On to Seesaw Class (Signing in as a Student)

[Signing On Handout Packet PDF](#)-
includes how to find student
email/password

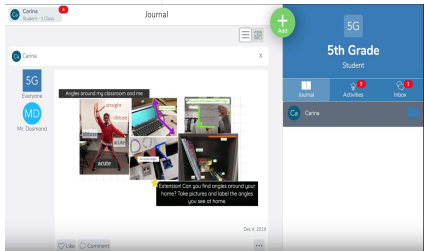




STEP 1: Go to <http://bit.ly/read834> and sign into Clever.



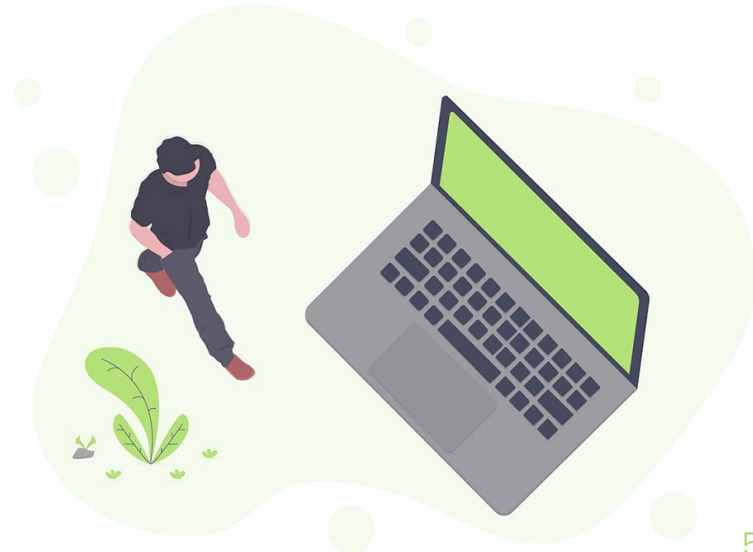
STEP 2: Scroll down to “School Tools” and click on Seesaw. This should take you directly into the Student Seesaw account.



STEP 3: Once logged in, you will be in your child’s student journal where they can create posts, complete activities, and see Announcements from their teacher.

******If you are having trouble going from Clever to Seesaw, see option 2 to go directly through Seesaw******

Option 1: Using Seesaw through Clever (for chromebooks and computers)

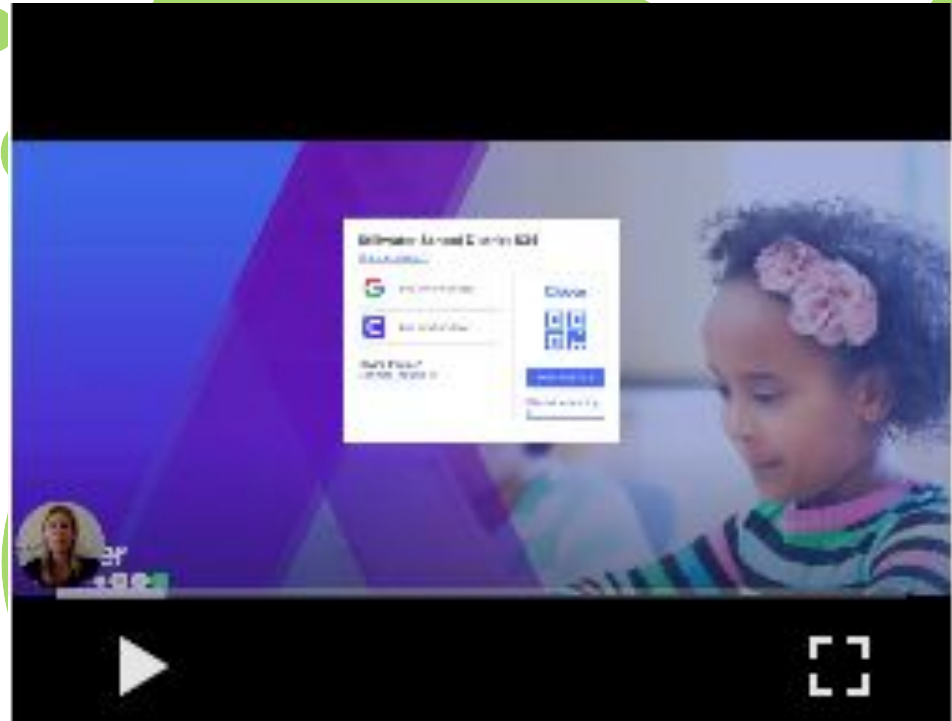


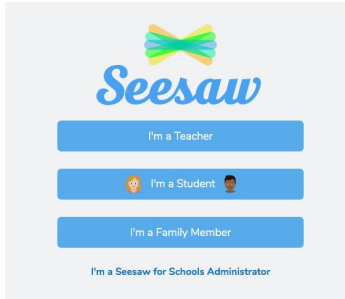
Option 1

How-To

Video:

Using Seesaw
through Clever
(for chromebooks and
computers)

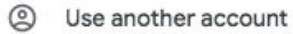




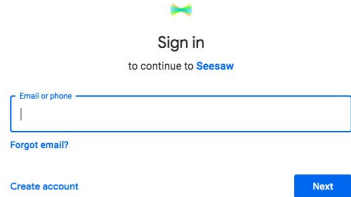
Step 1: go to app.seesaw.me and click on “I’m a Student”



Step 2: Click “Sign in with Google”

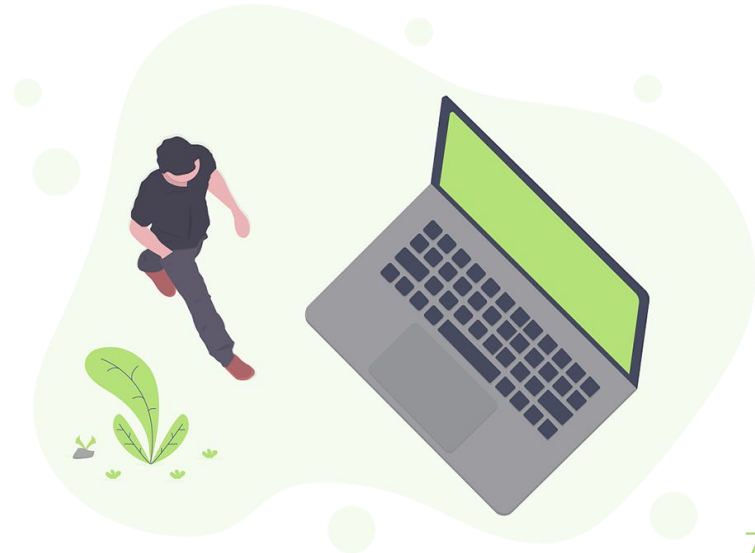


Step 3: Click “Use another account” or choose the correct email account listed



Step 4: enter student’s email and password. Click [here](#) for help finding email/password

Option 2: Using Seesaw directly through a browser (for chromebooks and computers)



Option 2

How-To

Video:

Using Seesaw
directly through a
browser
(for chromebooks and
computers)

Seesaw Family

Use this app for family access to student journals, messages and notifications from your student's teachers. This was the app we were asking most students to use to respond to teachers during the first two weeks of distance learning when we were using choice boards. Families will still use this app to communicate with teachers, see their child's journal, and receive family announcements. Note: You cannot see or post activities in this app.

Seesaw Class

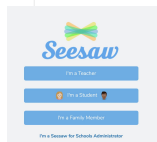
After the first two weeks of distance learning (after 4/13), some teachers may begin using this app to post activities for students. When activities are posted, they are visible to students when logged in as a student or using the Class app, but not when logged in as family or using the Family app. This is a way for students to respond without going in through their family's account. Your teachers will let you know if they will be posting activities and you should use this app.

0:10 / 4:43

Learn for Chrome is sharing your screen. Stop sharing



STEP 1: Download **Seesaw Class** app on your device or go to app.seesaw.me to get started.
This is different from the Family App!



STEP 2: Click 'I'm a Student'

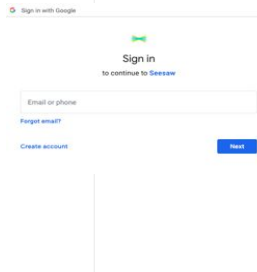


STEP 3: Click on "Google/Email Sign In"

NOTE: Do NOT enter email and password info on this page, wait for the google pop-up in the next step!



STEP 4: Click on "Sign In with Google"



STEP 5: In this window enter your child's email (*****###@stillwaterschools.org) and password (6 digit #) or select their name from the list (you may need to click "Use another account")

Option 3: Using Seesaw on a tablet or phone

Click BOTH of these when logging on:

1st click:



2nd click:

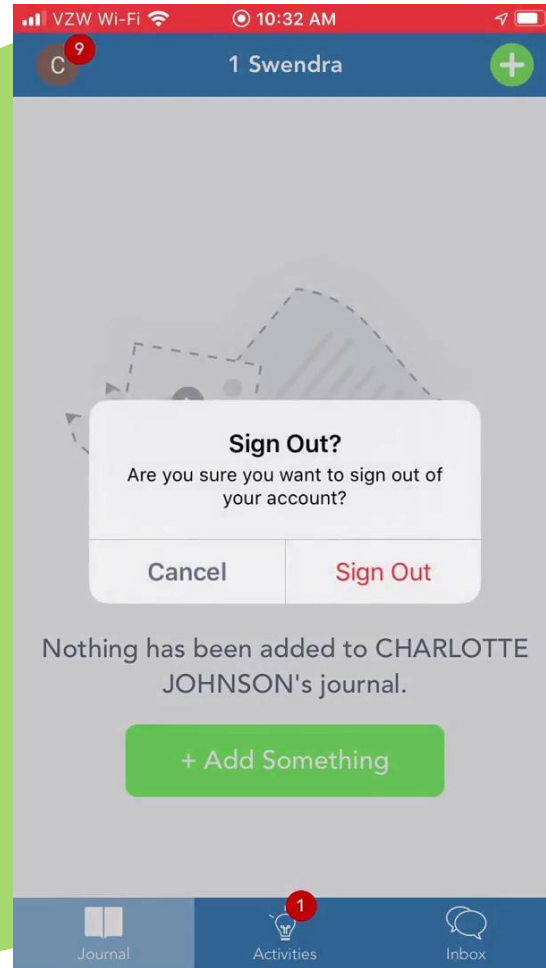


Option 3

How-To

Video:

Using the Seesaw Class app on a phone or tablet



Option 4:

Kindle or tablet

Try Option 3 first. If it is not working, try using Google Chrome or Firefox go to app.seesaw.me to login. Then follow the above directions for Option 2.

If you are having technical issues, let your student's teacher know and they can enter a Help Desk ticket for you.



Using Seesaw Class



Multiple Classes/ Users:

MULTIPLE CLASSES?

Once in the Seesaw Class app students will be able to switch between their different classes by clicking on their name in the top, left hand corner.



MULTIPLE USERS?

Also click on a student's name in the top, left hand corner to sign in/out for different users by clicking the settings button next to their name.



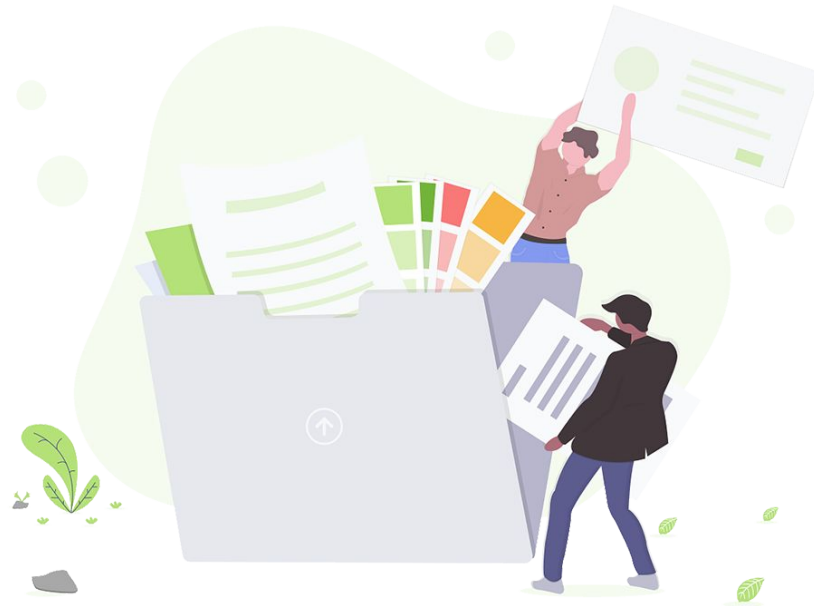
*****NOTE: make sure you are responding to an activity or message in the correct class i.e. make sure students are not in their Art class and responding to a math activity*****

Each student has multiple classes for their homeroom, specialists, and more. Students can click on their name in the upper lefthand corner to see their classes. The number of new activities or announcements for each class will show up in red for each class.



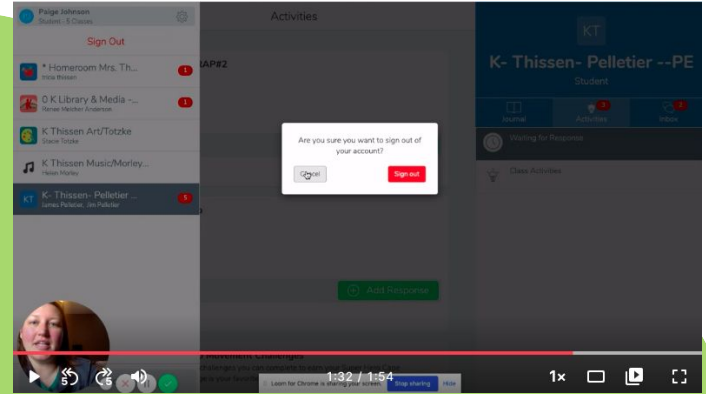


When students click on a class any new activities or announcements (inbox) will show up in red.

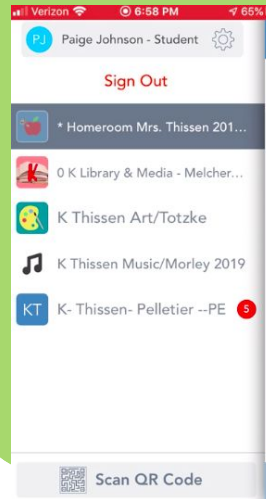


How-To Videos:

Navigating around inside Seesaw Class (or student account) on a computer or in the Seesaw Class app



Seesaw on a computer



Seesaw on a phone or tablet through the app

Completing an Activity:



When students click on a class any new activities or announcements (inbox) will show up in red. To complete an activity click on “Activities”

32					38	40
43	45					49
52			56	58		
63			66		69	70
71		74		77		

31 79 59 55 41 44 47 46 35 36 48
76 64 73 65 80 57 78 33 34 72 50
75 61 54 68 62 42 39 53 51 60 37
67

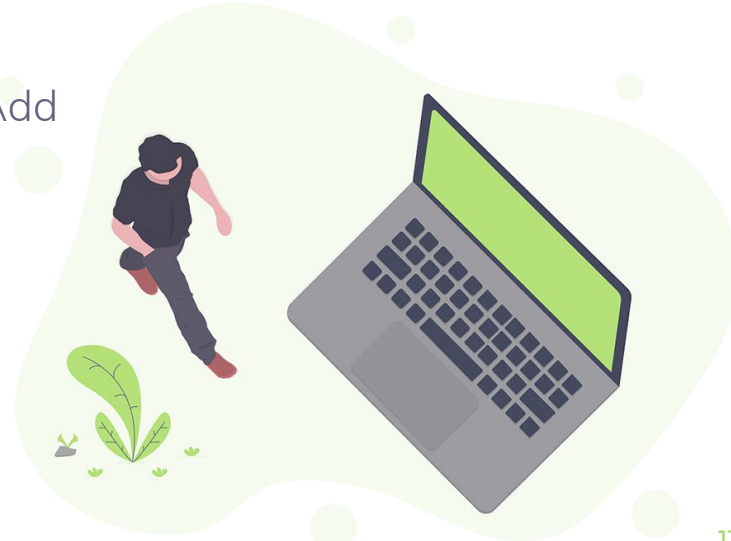
Finish the Grid
click Add response
click **T**
Move the numbers to the correct spaces.
click and check your work
click again to send it to me.

Play Instructions (0:19)

Waiting for Response

Assigned on Apr 9 at 02:53 PM

Then click on + Add Response



Click green check when done

✕ 🔍 📏 ↶ ↷ View Instructions Draft ✓

Move the numbers to the correct spaces.

	32						38		40
		43		45				49	
	52				56		58		
		63			66			69	70
71			74			77			

31 79 59 55 41 44 47 46 35 36 48
76 64 73 65 80 57 78 33 34 72 50
75 61 54 68 62 42 39 53 51 60 37

📏 🖍️ 🖌️ 🗑️

Tools to Use:

Text

Voice Record

Picture

Other Options

Select the type (and color) of writing tool to use

Need Help?

1. Contact your student's teacher
2. If it's a tech issue, teachers can put in a Help Desk ticket for you and our technology department will be in touch
3. Check out the next slide for FAQs



Frequently Asked Questions

Q: Can I still use the Seesaw Family app?

A: Yes! [Here is slideshow](#) walking your through using Seesaw Family app.

Q: Why can't I see any assigned activities in Seesaw?

A: Remember you cannot see assigned activities from the Seesaw Family app or if signed in as a family member. Once in as a student, be sure you are in the correct class.

Q: How do I know what my student is doing in her/his class during Distance learning?

A: Any responses your child submits for his/her teacher will be posted in their journal, which you can see.

Q: What platforms and operating systems does Seesaw support?

A: [Click here](#) to find out more from the Seesaw Help Center.



Credits

Special thanks to all the people who made and released these awesome resources for free:

- Presentation template by [SlidesCarnival](#)
- Photographs by [Unsplash](#)
- Illustrations by [Undraw.co](#)

