

What Families Can Expect

A Day in the Life of a Hybrid Learner

Given the health and safety challenges associated with reopening school during a global pandemic, students, staff, and families must be prepared for how school will look and feel in a Hybrid Learning environment. Although returning, in part, to in-person instruction will feel different at first, CMSD is committed to ensuring the safety of our students and staff. While these changes will impact most of our students, we

are equally committed to meeting the diverse needs of our students. Educators and staff in our Special Education and Multilingual Departments will continue to work directly with students and families to ensure every student is supported in his/her return to a school environment. When students attend school for in-person instruction, this is what they can expect their day to look and feel like:



1 Getting ready for school

Students will complete their required sick screen protocol at home. Students will bring their clean cloth face covering with them to school and wear it throughout the school day.

2 Traveling on the school bus

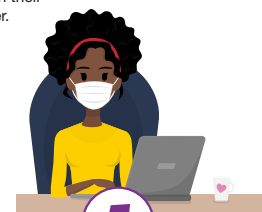
Students must wear cloth face coverings while on the school bus. School bus drivers will wear appropriate PPE and offer students hand sanitizer prior to boarding the bus. Students will sit by themselves or only with their sibling and be spaced to ensure proper social distancing.

3 Arrival at school

Drop-off times may be staggered, and students and staff will enter the school building through assigned entrances to ensure proper social distancing. Upon entering the school building, students will wash their hands or use hand sanitizer.

4 Entering the classroom

Students will go straight to their classrooms. Students will sit in assigned spaces, eat meals in their classroom, and stay with their class for the full school day.



7 Following classroom procedures

Students and teachers will wear masks or protective shields at all times, and student-teacher close contact will be limited. Only a limited set of supplies may be shared, and hand sanitizer will be used as needed.

8 Taking restroom/lunch breaks

Classrooms will have designated bathrooms, which will be cleaned frequently throughout the day. Students will need to wash their hands thoroughly and use hand sanitizer anytime they return to their classroom. Students will eat lunch in their classrooms, or if space allows, eat lunch in the cafeteria or other location on a staggered schedule. Lunchrooms will be thoroughly cleaned and disinfected between use.

9 Receiving student services

Related service providers, English learner teachers, diverse learner teachers, and social emotional learning specialists, among others, will continue to provide student services. These staff members will rotate across assigned classrooms to provide services. If they need to see students in a class not assigned to them, those services will be provided remotely, or with social distancing. Staff will have appropriate PPE depending on their job duties.



10 Accessing content

Students remain in their classroom throughout the day, but additional teachers may rotate across classrooms to provide instruction in multiple subjects and to enable breaks for classroom teachers.

11 Exiting the building

Students move through hallways, as designated by directional signs and will be socially distanced from other students to ensure safety at dismissal time. Students leave the building through the door assigned for their exit.

12 Addressing symptoms

If a student arrives exhibiting COVID-19 symptoms, or begins to exhibit symptoms during the day, they will be moved to the school's designated Care Room to wait until they are picked up.

13 Participating in in-person instruction

Students attending school during the public health crisis must maintain social distance to the extent feasible within their classrooms, and must either maintain at least six feet of distance from their classmate at all times.