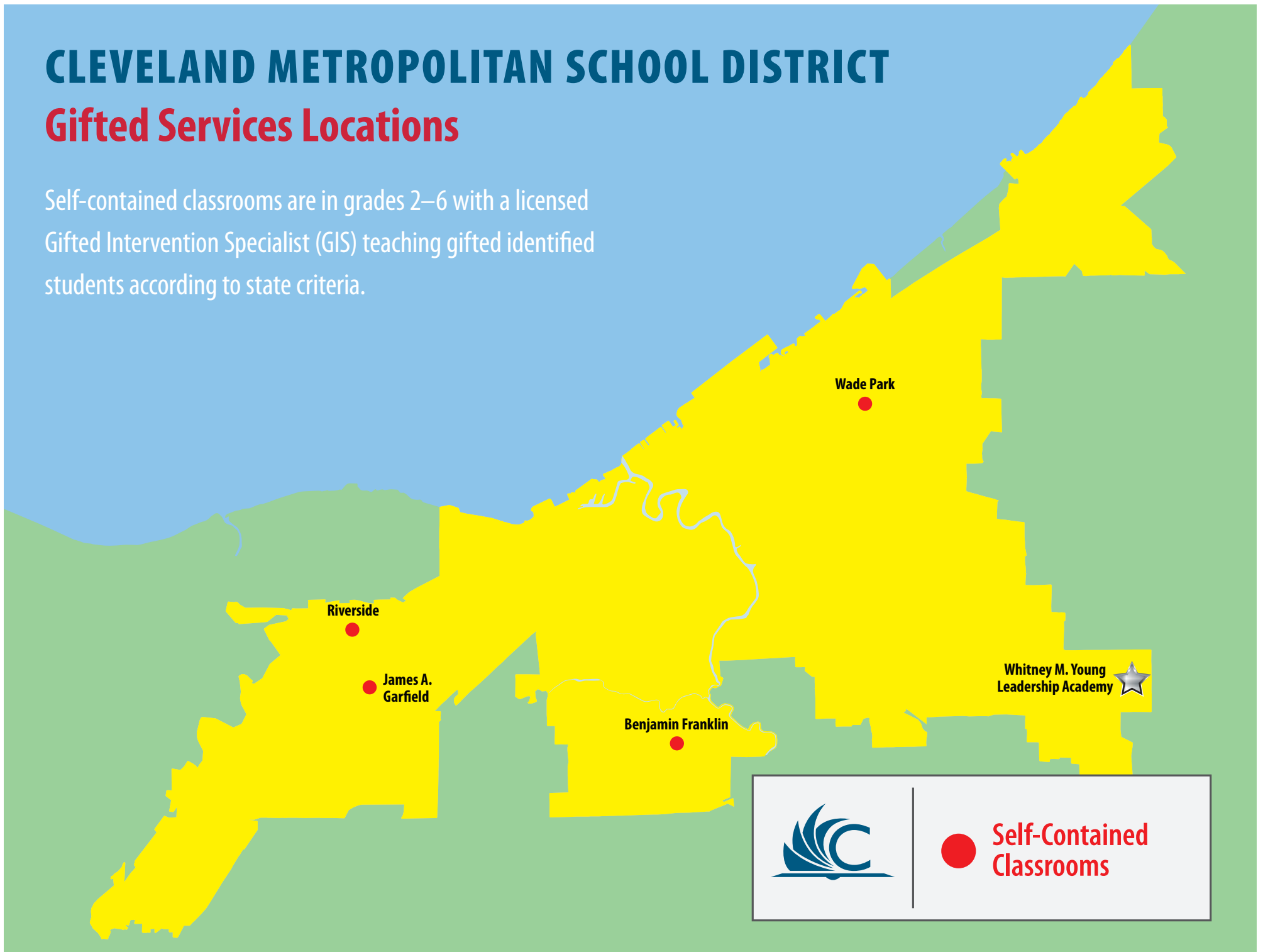


# CLEVELAND METROPOLITAN SCHOOL DISTRICT

## Gifted Services Locations

Self-contained classrooms are in grades 2–6 with a licensed Gifted Intervention Specialist (GIS) teaching gifted identified students according to state criteria.


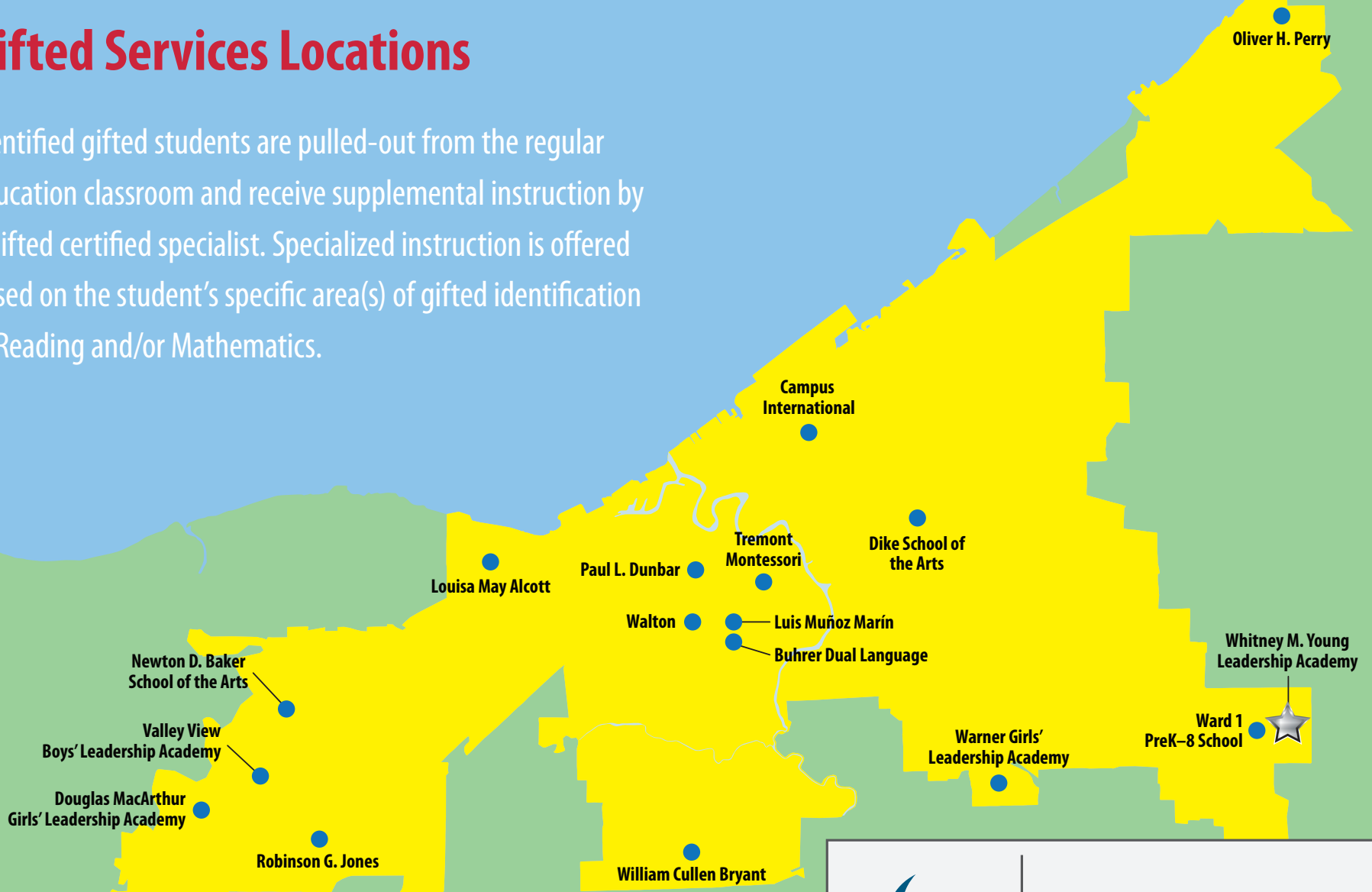


**Self-Contained  
Classrooms**

# CLEVELAND METROPOLITAN SCHOOL DISTRICT

## Gifted Services Locations

Identified gifted students are pulled-out from the regular education classroom and receive supplemental instruction by a gifted certified specialist. Specialized instruction is offered based on the student's specific area(s) of gifted identification in Reading and/or Mathematics.



● Pull-Out Resources