

Welcome to our Virtual Back to School Meeting

Wilbur Wright

We will begin shortly.
Please mute your microphone.





Welcome

- Please mute your microphones.
- The meeting is being recorded for families who cannot attend, and a copy of this recording will be placed on our website.
- If you have questions during the presentation, please place them in the chat.
- We will have a question/answer session at the end of the presentation.
- If you are calling in, please email renae.moore@clevelandmetroschools.org, and we will respond within 48 hours.

ICEBREAKER: "If your current mood/feelings were an ice cream flavor, what would it be?"

Our Priorities

- Maintaining the health, safety, and well-being of our scholars and staff
- Exemplify excellence in learning and teaching, filled with joy and aligned to a coherent, unified core curriculum
- **Supporting our scholars, staff, and families as they adapt to new methods and rhythms of learning and teaching**
- Ensuring operational efficiency across the organization to encourage flexibility and financial health
- Partnering with community organizations and leveraging local assets to more fully and equitably support our scholars and their families

To read the entire ReOpening Plan visit:

<https://www.clevelandmetroschools.org/ReopeningCMSD>



We are in this together

1. We are committed to maintaining the health, safety and well-being of our students, families and educators.
2. We will support our scholars, families and educators as we adapt to new methods and cycles of learning and teaching
3. We will provide regular communication about your scholar's progress.
4. We will partner with community organizations to support our scholars and families.
5. We are all learning to navigate this new "normal" and will continue to partner with you throughout the year.



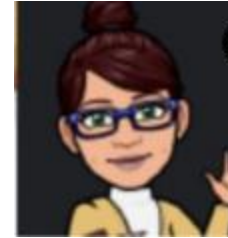
Important Contacts



Principal: Mrs. Virmeal Finley

Assistant Principal: Miss Kathryn Baltas

Dean of Students: Mrs. Renae Moore



Family Support Specialist (SAY YES): Ms. Campbell

Secretaries: Ms. Nobles and Ms. Burkhalter

Office Phone: 216-838-6800

Help Desk Tech: 216-838-0440

Staff email: firstname.lastname@clevelandmetroschools.org

Other Important Numbers

COVID-19 Hotline	216.838.WELL (9355)
Rapid Response Hotline for Social & Emotional supports	216.838.2273
IT Computer support	216.838.0440
Multicultural Multilingual support	216.838.0140
School Choice & Enrollment Hotline	216.838.3675 or visit ChooseCMSD.org
Family and Community Engagement	216.838.3223
Special Education Office	216.838.7733
Project ACT Foster & Homeless support	216.838.0210
All other District-related supports	216.838.0000
Community Resources:	
United Way 24/7 confidential assistance	Dial 211
24 Hour Suicide Hotline	216.623.6888
Domestic Violence Hotline	216.391.4357
Ohio Mental Health Crisis Hotline	Text 4HOPE to 741741

School Office Hours and Visitation Procedures

School office hours: 8:00 a.m. to Noon and
1:00 to 4:00 p.m.

- Please call to make an appointment prior to visit.
- Visitors will complete COVID-19 health screening and have their temperature checked prior to entering the building. Visitors should social distance (6 feet).
- All visitors must wear a face mask. If you don't have a mask, one will be provided.

Technology Distribution

Tuesday Sept. 1st

9:00 am-11:00 am - Grades 7-8

11:00 am-1:00 pm - Grades 5-6

1:00 pm-3:00 pm - Grades 3-4

Wednesday Sept. 2nd

9:00 am-11:00 am -Grades 1-2

11:00 am-1:00 pm – Kindergarten; 9th grader drop off; exchanges

1:00 pm-3:00 pm - Drop offs/exchanges

School Supplies and other resources

- CMSD has purchased remote learning kits which will include school supplies and ear buds for your scholar to use for the first 9 weeks of remote learning
- You will be contacted when these items are available to pick up from our school

Preschool...Kindergarten...

Ms. Medwid

Ms. Joseph

Ms. Whelan

Ms. Psota

Ms. Droba

Ms. Watts

Ms. Kilbane

Ms. Rivera

Ms. Francescone

Ms. Gentile

1st Grade...2nd Grade...3rd Grade

Ms. Wilson

Ms. Elliott

Ms. Kelly

Ms. West

Ms. Clapacs

Ms. White

4th Grade...5th Grade

Ms. Novick

Ms. Woodley

Ms. Fox

Ms. Tabor

6th Grade...7th Grade... 8th Grade

Ms. Gamble

Mr. McClelland

Ms. Bures

Ms. Alexander

Ms. Davidson

Ms. Hyland

Art...Media...Music...PE...Tech



Art: Mr. Osterland
Media: Ms. Ialacci
Music: Mr. Jones
PE: Mr. Olsen
Tech: Mr. Kincade



Wilbur Wright Staff

Intervention Specialists:

Ms. Caraballo

Ms. Birt

Ms. Gulling

Mr. Cooper

Mr. Cummings

Ms. Dawson

Ms. Hudson

Ms. Royster

Ms. Pachuta

Mr. Cuffari

Mr. Caskey

Paraprofessionals:

Ms. Shotwell, Mr. Bracken,

Ms. Johnikin, Ms. Gray,

Mr. Holt, Ms. Pipa, Ms. Goodman,

Ms. Williams, Mr. Jones

OT/PT: Ms. Atsu, Ms. Broski, Ms.
Ballas

Speech: Ms. Baker, Ms. Boss, Ms.
Alsenas, Ms. Rzucidlo

School Pysch: Ms. Slygh

Wilbur Wright Staff

Nurse: Ms. Kozlowski

ELL (Bilingual Services): Ms. Kziacka & Ms. Alvarado McWhite

Interpreter: Ms. Reynolds

Planning Center: Mr. Evans

Building Substitutes: Ms. Gindraw & Mr. Bell

Security: Officer Dunlap & Officer Diaz

Custodian: Mr. Jim Gasiewski

Assistant Custodian: Ms. Darnetta Cudgel

Cleaner: Ms. Wendy Berning

Schoology – Remote Learning Platform

- Schoology is an integrated learning management solution which provides course management, mobile learning, and support for communication.
- Schoology enables our scholars, parents and teachers to engage with learning materials and their school community from the classroom and beyond.
- With Schoology, scholars can digitally submit homework assignments, review grades, participate in interactive discussions, receive announcements and feedback, take tests, write academic blogs, and more.
- As a parent, you will be able to view your child's activity and progress within the platform and communicate with teachers.

Schoology – Remote Learning Platform

- Parents and students can access Schoology through the Clever Learning Portal.
- Students can use their digital badge or username and password to login to the Clever Learning Portal
- Schools can assist students with their Clever username and password.
- Parents that do not have a Clever username and password will receive an email invitation sent to the email that you have on file at your child's school. Your invitation email will include a brief tutorial and link to create a Clever account.
- If you did not receive an email or received an invitation, but need help logging into Clever, email CMSD.Integration@ClevelandMetroSchools.org for assistance. Training and support resources will be available on CMSD's public website regarding how to access and use Schoology and other learning applications

Standard Remote Learning School Day

Standard K-12 student instructional day – 8:30 AM to 3:00 PM

- Students will have a formal class schedule
- Monday, Tuesday, Thursday, Friday: Synchronous learning (classes) for up to 180 minutes per day; asynchronous learning (homework) for 160-180 minutes per day
- Wednesday: Family engagement, Asynchronous learning, tutoring, office hours, small group instruction, etc.
- Preschool: Up to 90 minutes of synchronous and 80 minutes of asynchronous learning



Supporting your scholar's remote learning

- Get back into the routine of school, i.e. making bed, grooming, dressing for school, etc.
- School uniforms are not required for the first 9 weeks, but scholars should wear school appropriate clothing during remote learning.
- Create a schedule with your child and make a commitment to stick with it.
- Structure and routine can greatly help your child from falling behind with assignments.
- Discuss your family's schedule and identify the best times for learning and instruction, as well as family-oriented physical activity, such as walks outside.
- A family calendar or other visuals could be useful for keeping track of deadlines and assignments.

Supporting your scholar's remote learning at home

- Find a space in your home that's free of distractions, noise, and clutter for learning and doing homework.
- This could be a quiet, well-lit place in your dining room or living room or a corner of your home that could fit a small table, if available.

Supporting your scholar's social emotional wellness

- Watch for behavior changes in your child (e.g., excessive crying or irritation, excessive worry or sadness, unhealthy eating or sleeping habits, difficulty concentrating), which may be signs of your child struggling with stress and anxiety.
- Ask how your child is feeling and communicate that what they may be feeling is normal.
- Identify opportunities for your child to be physically active during virtual/at-home learning.
- Reach out to school staff for support.

Family Care Plan

Over the next week educators from our school will be calling families to assist you in a variety of ways

- Selecting your meal service option
- Technology support
- Locations for remote learning for scholars who need a safe space during the school day
- Determining other areas where you may need support to make sure that you and your scholar are ready for remote learning

Meal Distribution

Families have two meal service options to select from during the remote learning period. Meal pickup begins ***Tuesday, September 8, 2020 from 10:30 a.m. to 2:00 p.m.***

- Scholars will receive a letter in the mail with a barcode they must bring to the meal site to pick up meals.
- If you do not receive your letter in the mail, we can print it for you.
- Families must select one option to follow during the nine-week remote learning period.
- Options are available for all students PreK-12, so the family will only have one pick-up site for meal service.

Meal Distribution

Option 1: Pickup 4 days during the week

- Grab and Go meals service available at all K-8 sites will distribute lunch and breakfast Monday, Tuesday Thursday and Friday.
- On Tuesday, scholars will be given food for Tuesday AND Wednesday.

Meal Distribution

Option 2: Once a week pickup Grab and Go Meals

- Available at 17 High School sites for once a week service of meals
- All Scholars/Families can go to the closest school building to their homes
- Selection option determined through Family Care Plan the school staff are to establish with every scholar/family



We're a Proud
Say Yes
School

Family Support Specialist @Wilbur Wright
Jamila Campbell
216-219-1499
JCAMPBELL@SAYYESCLEVELAND.ORG



What is Say Yes Cleveland?



SUPPORT SERVICES FROM PREK-12

- Family support specialists
- Postsecondary Planning System
- Mental health services
- Free legal services
- Afterschool and summer programs



SCHOLARSHIPS AFTER GRADUATION

- Scholarships cover the cost of college or postsecondary tuition, after federal and state grants, to every eligible CMSD graduate – for the next 25 years.
- Can be used at all public universities, community colleges, and career training programs in Ohio + over 100 private colleges and universities across the nation.

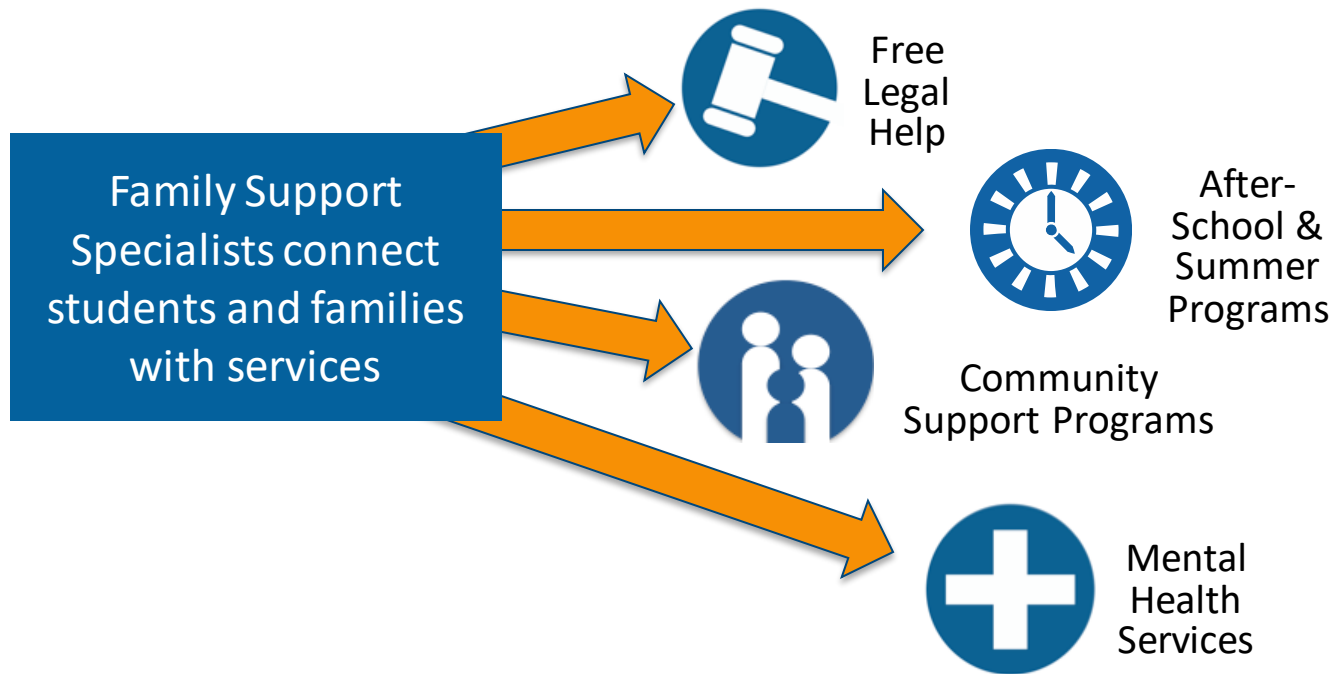
Support Services



- Family Support Specialists
- Free legal services
- Postsecondary Planning System
- Afterschool and summer learning programs
- Mental health services

Support services will be phased in over four years so that ALL CMSD & partner charter schools receive services by 2023.

Family Support Specialists



1st Cohort of Say Yes Schools: 2019-2020

PreK-8 Schools

- Almira Elementary
- Buhner Dual Language Academy
- Joseph M. Gallagher
- Marion Sterling
- Mary M. Bethune
- Memorial
- Orchard
- Wilbur Wright
- Michael R. White
- Miles Park

High Schools

- John Adams College & Career
- John Marshall School of Civic & Leadership
- Lincoln West School of Global Studies
- Max S. Hayes
- New Tech East
- Rhodes College & Career Academy

2nd Cohort of Say Yes Schools: 2020-2021

PreK-8

- AB Hart (formerly Fullerton)
- Almira
- Anton Grdina
- Bolton
- Buhner Dual Language Academy
- Campus International
- *Citizens Leadership Academy**
- Clark
- *E Prep & Village*
- *Prep Woodland Hills Campus**
- *E Prep & Village Prep Cliffs Campus**
- Garfield
- Halle (formerly H. Barbara Booker)
- Hannah Gibbons
- Joseph M. Gallagher
- Louis Agassiz
- Marion-Sterling
- Mary M. Bethune
- Memorial
- Michael R. White
- Miles Park
- Oliver H. Perry
- Orchard
- Sunbeam
- Wade Park
- Warner Girls' Leadership Academy
- Wilbur Wright
- William Rainey Harper
- Willson

**Breakthrough Charter*

High Schools

- Campus International High School
- Cleveland School of the Arts
- Davis Aerospace & Maritime High School
- Garrett Morgan
- Ginn Academy
- John Adams College and Career Academy
- John Hay Cleveland School of Science and Medicine
- John Marshall School of Civic and Business Leadership
- Lincoln-West School of Global Studies
- Max S. Hayes High School
- New Tech East
- New Tech West
- Rhodes College & Career Academy
- Rhodes School of Environmental Studies

- Say Yes Cleveland provides scholarships covering the cost of college or postsecondary tuition, after federal and state grants, to every eligible CMSD graduate – for the next 25 years.
- Scholarships can be used at all public universities, community colleges, and career training programs in Ohio – as well as over 100 private colleges and universities across the nation.

Scholarships



Scholarships Eligibility*



- Continuously residing in City of Cleveland or other areas** served by CMSD from 9th grade through graduation
- Continuously enrolled in any CMSD or partner charter high school from 9th grade through graduation

* Classes of '19, '20, '21 '22: Enrollment & residency requirements started Jan. 18, 2019

**CMSD's footprint includes the City of Cleveland, Bratenahl, Linndale, Newburgh Heights, and parts of Brook Park and Garfield Heights assigned to the district.

Scholarship Contacts



Say Yes Cleveland scholarships are administered by College Now Greater Cleveland.

Questions about Say Yes scholarships, including the Scholarship portal, applications, and payments to schools, can be directed to the following:

- **Say Yes Scholarship Hotline: 216.454.5400**
- **SayYesScholarship@collegenowgc.org**

Questions and Answers

Please place your questions or comments in the chat.

If you are participating by phone, please email your questions or comments to

virmeal.finley@clevelandmetroschools.org

kathryn.baltas@clevelandmetroschools.org

renae.moore@clevelandmetroschools.org

Feedback

https://forms.office.com/Pages/ResponsePage.aspx?id=5hclDfAM6ESigWCfRKquKVErIM5BxFNFnTKP8g_193tUQkM5M042QldXTVgySjhCNFg3RkxONFpERC4u